

F

E

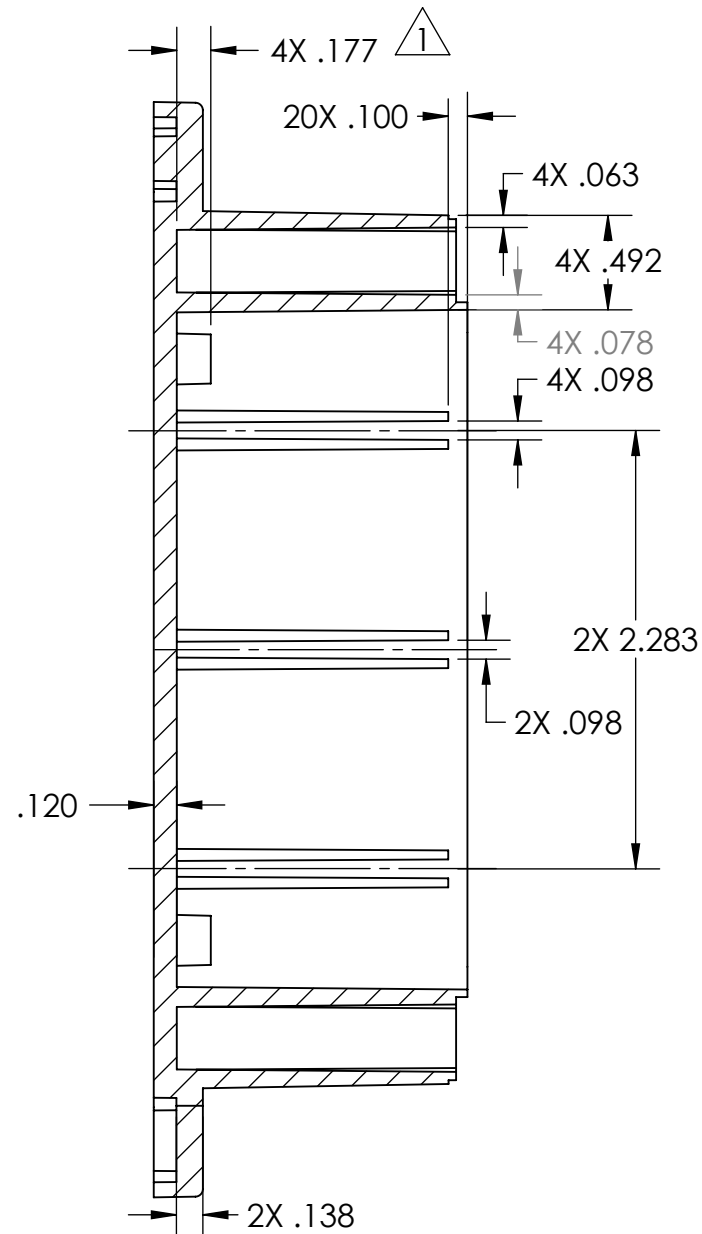
D

C

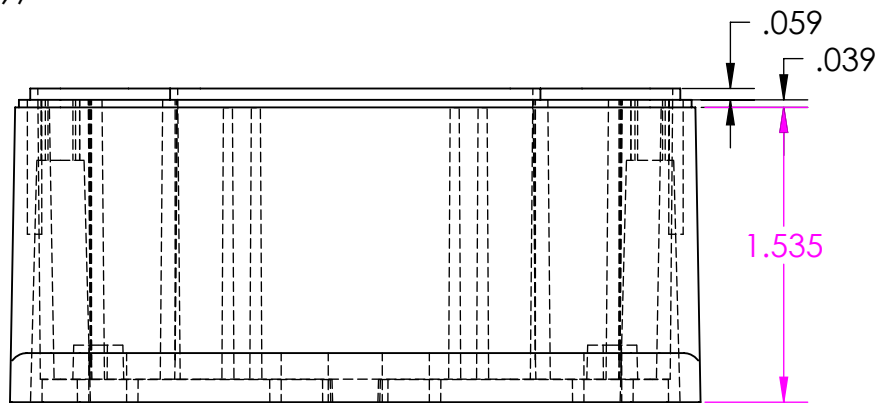
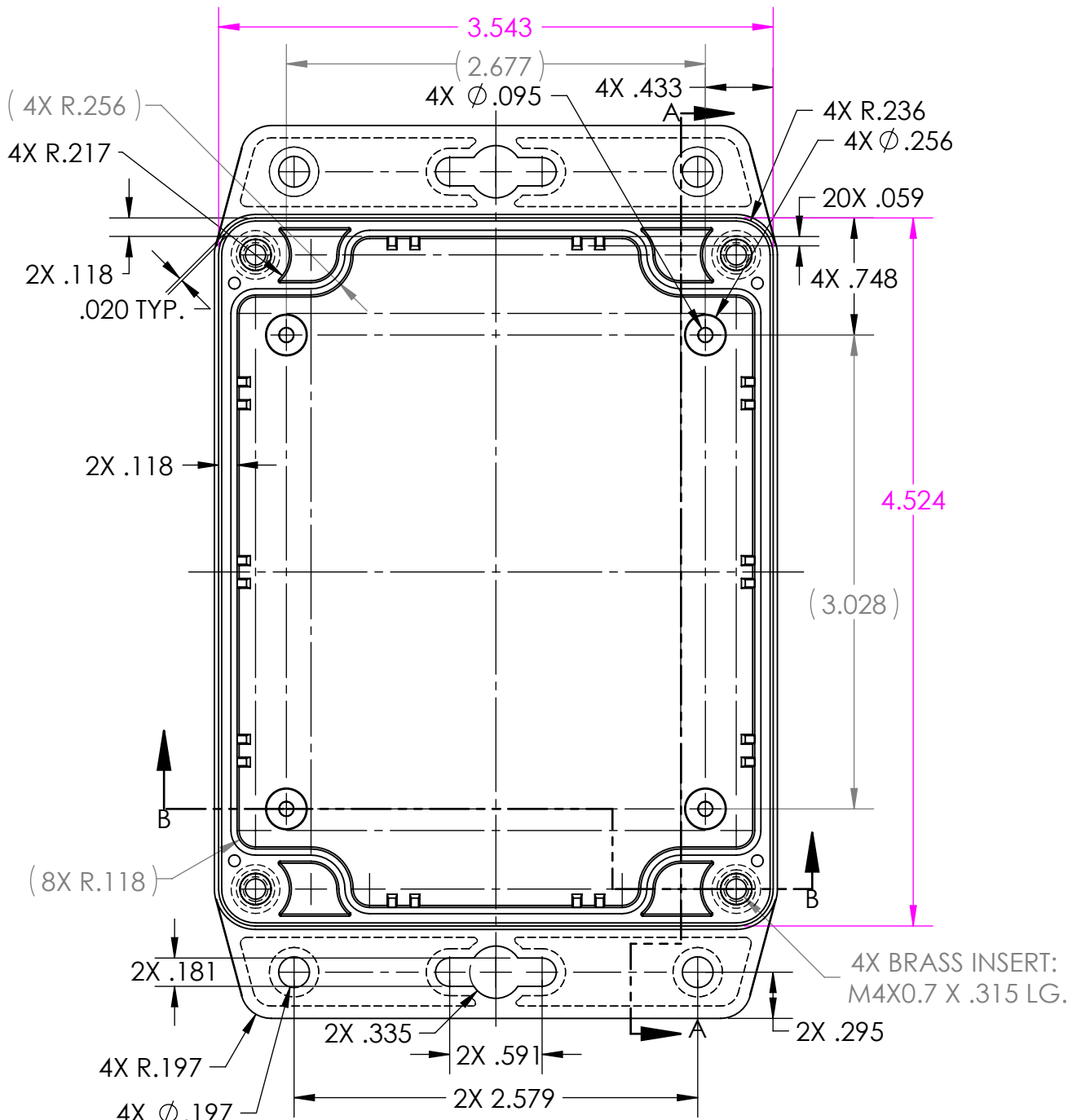
B

A

TOLERANCE CHART			
6 SIGMA			
DIMENSION RANGE	TOOL DEPENDENT	NON-TOOL DEPENDENT	
.000 .040	±.0018	±.0042	
.040 .120	±.0024	±.0054	
.120 .240	±.0030	±.0060	
.240 .390	±.0036	±.0066	
.390 .590	±.0042	±.0072	
.590 .870	±.0048	±.0072	
.870 1.180	±.0054	±.0078	
1.180 1.570	±.0060	±.0084	
1.570 2.090	±.0072	±.0096	
2.090 2.760	±.0078	±.0108	
2.760 3.540	±.0090	±.0120	
3.540 4.700	±.0108	±.0132	
4.700 6.300	±.0126	±.0150	
6.300 7.870	±.0150	±.0180	

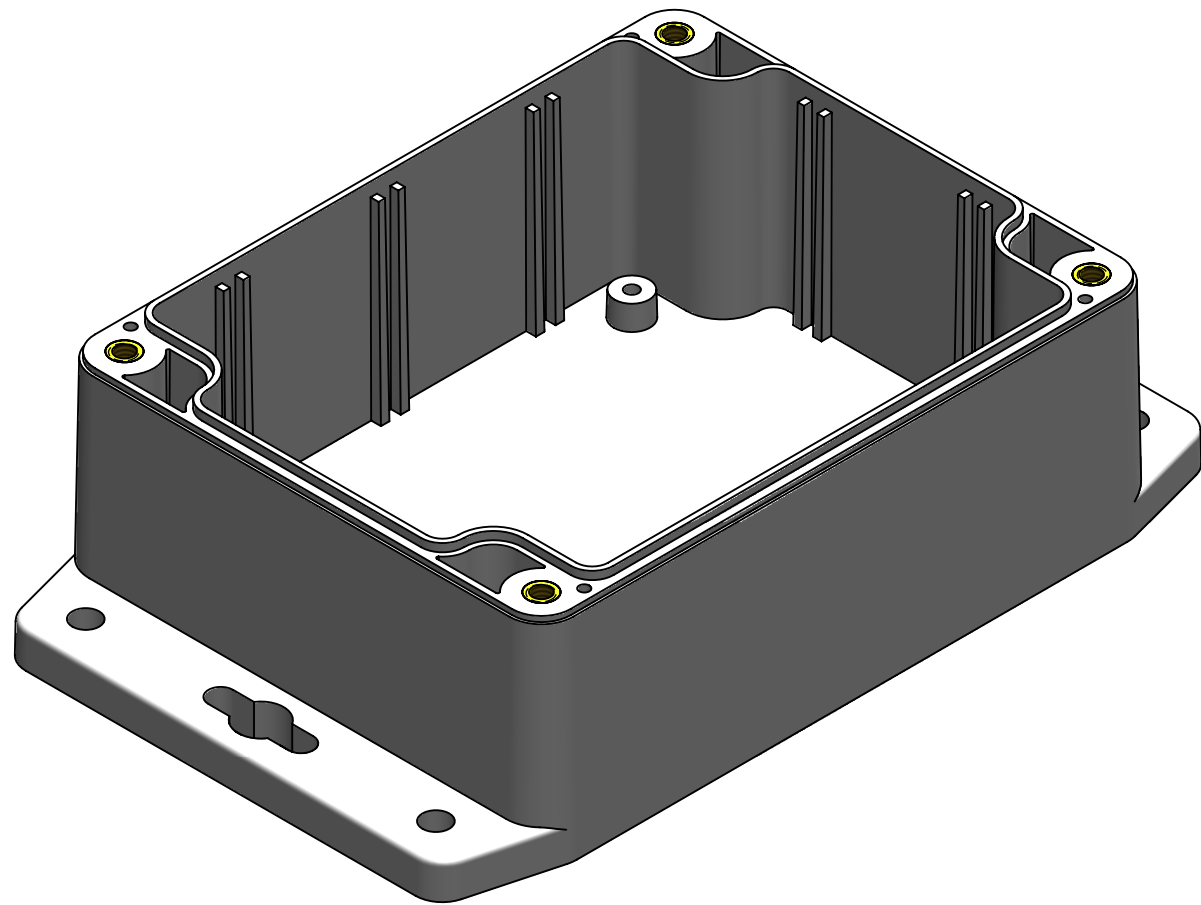
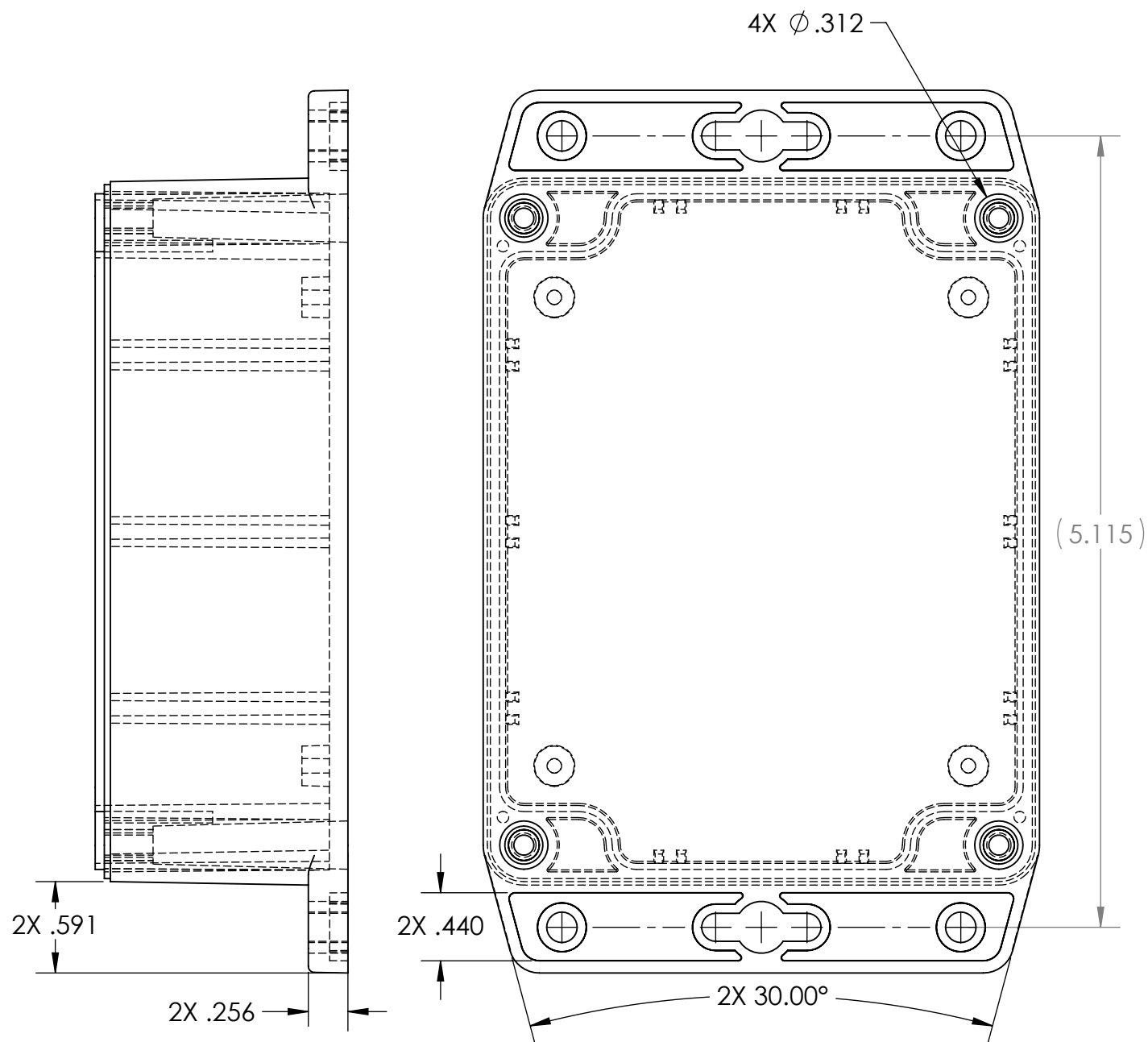


SECTION A-A




SECTION B-B

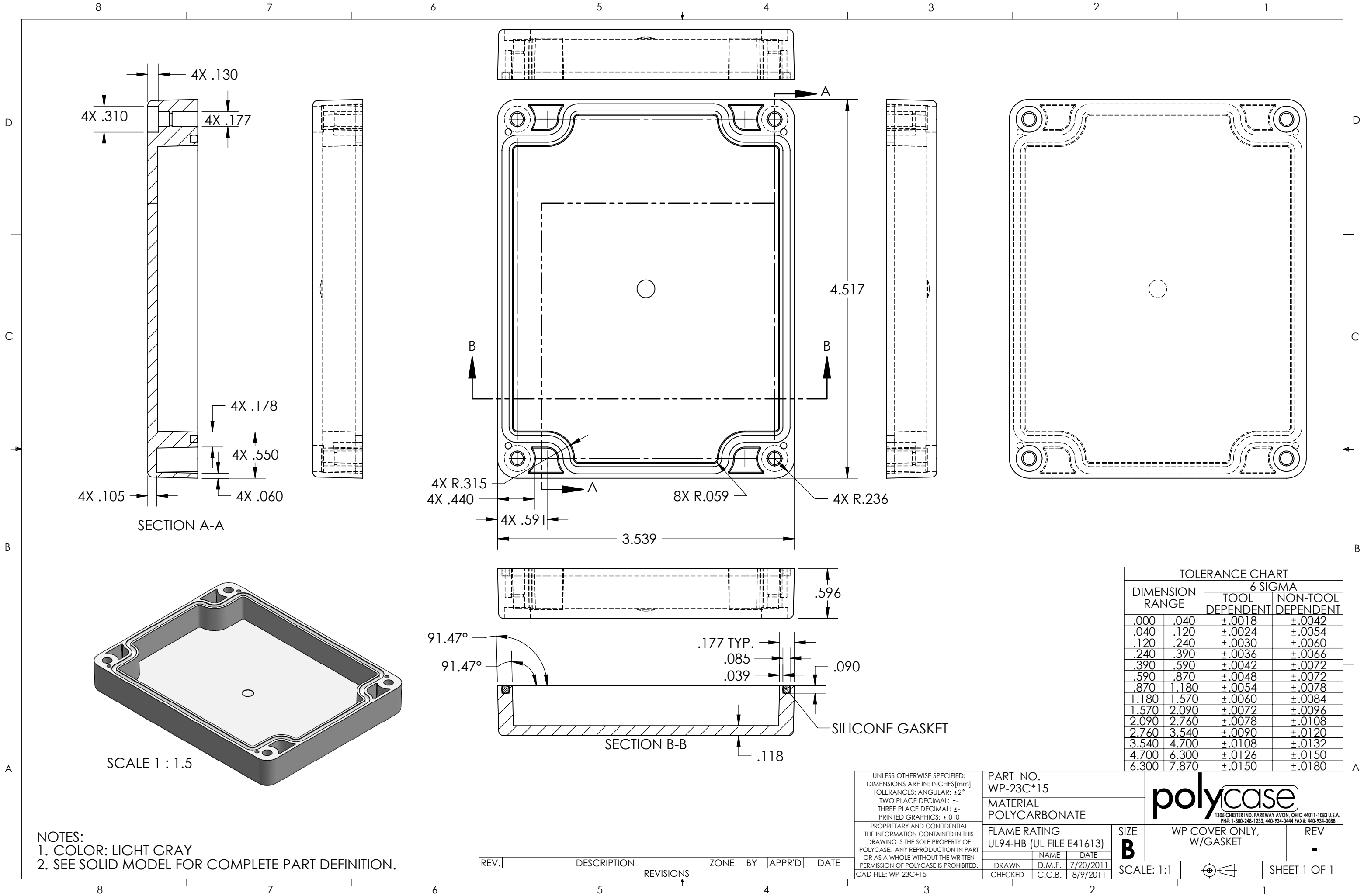
PCB BOSSES ACCEPT A M3 OR #4 THREAD FORMING SCREW. (NOT INCLUDED)



- NOTES:
1. COLOR: LIGHT GRAY
2. SEE SOLID MODEL FOR COMPLETE PART DEFINITION.

1	.177 WAS .157	F8	D.M.F.	C.C.B.	5/18/2017
REV.	DESCRIPTION	ZONE	BY	APPR'D	DATE
REVISIONS					

UNLESS OTHERWISE SPECIFIED: DIMENSIONS ARE IN: INCHES[mm] TOLERANCES: ANGULAR: ±2° TWO PLACE DECIMAL: ± THREE PLACE DECIMAL: ± PRINTED GRAPHICS: ±.010 PROPRIETARY AND CONFIDENTIAL THE INFORMATION CONTAINED IN THIS DRAWING IS THE SOLE PROPERTY OF POLYCASE. ANY REPRODUCTION IN PART OR AS A WHOLE WITHOUT THE WRITTEN PERMISSION OF POLYCASE IS PROHIBITED. CAD FILE: WP-23BF*15		PART NO. WP-23BF*15 MATERIAL POLYCARBONATE FLAME RATING UL94-HB (UL FILE E41613)		polycase 1305 CHESTER RD. PARKWAY AVON, OHIO 44011-1083 U.S.A. PH: 1-800-248-1231 440-934-0444 FAX: 440-934-0088		WP BASE, W/PCB BOSSES, W/FLANGES		REV 1	
DRAWN CHECKED	NAME C.C.B.	DATE 8/16/2011 8/29/2011	SIZE C SCALE: 1:1					SHEET 1 OF 1	



4X .130
4X .310
4X .177
4X .178
4X .550
4X .060
4X .105

SECTION A-A

4X R.315
4X .440
4X .591
3.539
8X R.059
4X R.236
4.517

.596
91.47°
91.47°
.177 TYP.
.085
.039
.090
.118
SECTION B-B
SILICONE GASKET

TOLERANCE CHART			
DIMENSION RANGE		6 SIGMA	
		TOOL DEPENDENT	NON-TOOL DEPENDENT
.000	.040	±.0018	±.0042
.040	.120	±.0024	±.0054
.120	.240	±.0030	±.0060
.240	.390	±.0036	±.0066
.390	.590	±.0042	±.0072
.590	.870	±.0048	±.0072
.870	1.180	±.0054	±.0078
1.180	1.570	±.0060	±.0084
1.570	2.090	±.0072	±.0096
2.090	2.760	±.0078	±.0108
2.760	3.540	±.0090	±.0120
3.540	4.700	±.0108	±.0132
4.700	6.300	±.0126	±.0150
6.300	7.870	±.0150	±.0180

NOTES:
1. COLOR: LIGHT GRAY
2. SEE SOLID MODEL FOR COMPLETE PART DEFINITION.

REV.	DESCRIPTION	ZONE	BY	APPR'D	DATE
REVISIONS					

UNLESS OTHERWISE SPECIFIED:
DIMENSIONS ARE IN: INCHES [mm]
TOLERANCES: ANGULAR: ±2°
TWO PLACE DECIMAL: ±
THREE PLACE DECIMAL: ±
PRINTED GRAPHICS: ±.010

PROPRIETARY AND CONFIDENTIAL
THE INFORMATION CONTAINED IN THIS
DRAWING IS THE SOLE PROPERTY OF
POLYCASE. ANY REPRODUCTION IN PART
OR AS A WHOLE WITHOUT THE WRITTEN
PERMISSION OF POLYCASE IS PROHIBITED.
CAD FILE: WP-23C+15

PART NO.
WP-23C*15

MATERIAL
POLYCARBONATE

FLAME RATING
UL94-HB (UL FILE E41613)

DRAWN
D.M.F. 7/20/2011

CHECKED
C.C.B. 8/9/2011

SIZE
B

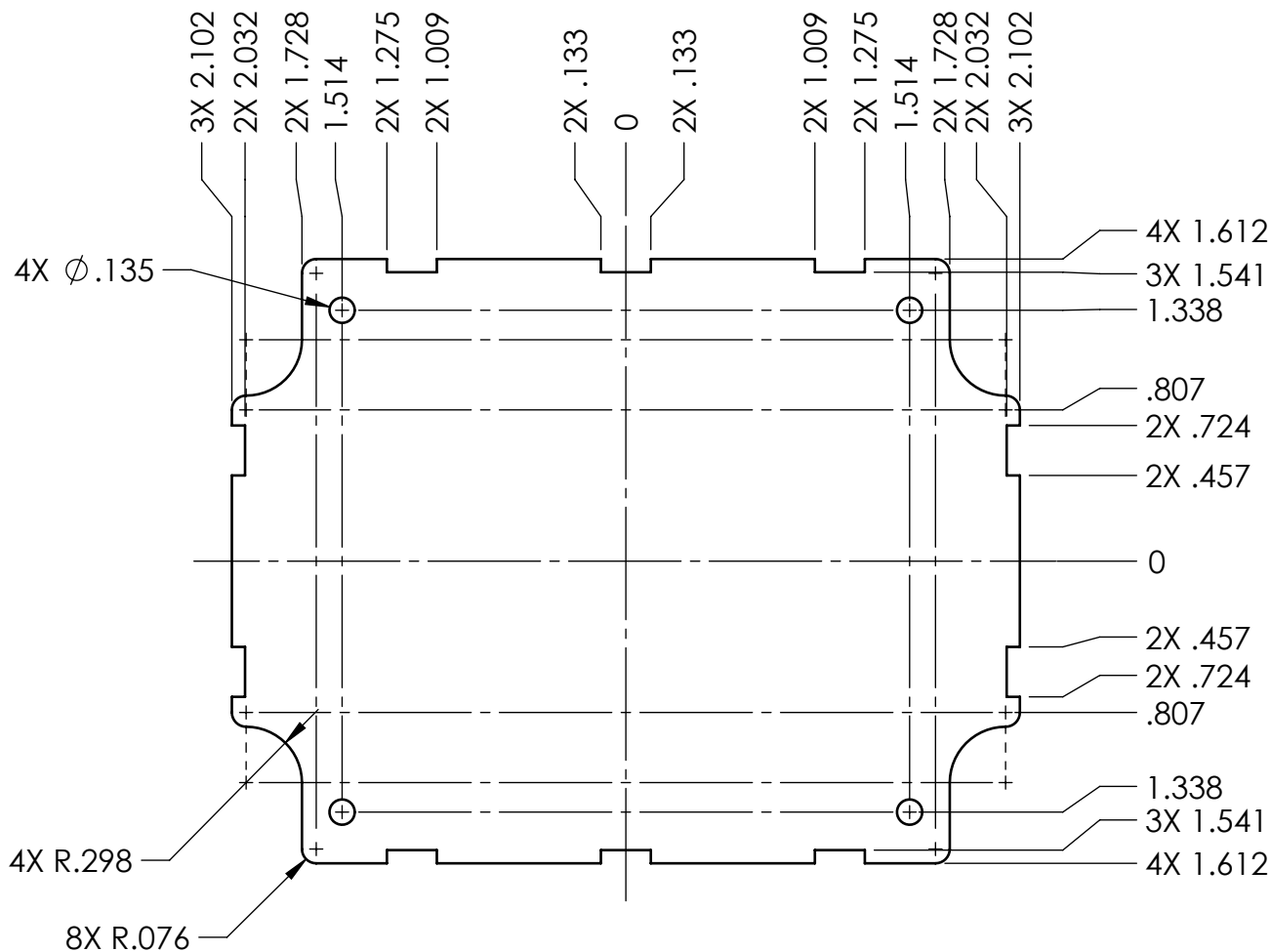
SCALE: 1:1

WP COVER ONLY,
W/GASKET

REV
-

polycase
1305 CHESTER IND. PARKWAY AVON, OHIO 44011-1083 U.S.A.
PH# 1-800-248-1233, 440-934-0444 FAX# 440-934-0088

SHEET 1 OF 1



NOTES:

- INCLUDES .030 CLEARANCE FROM INTERIOR OF WP-23BF*15

UNLESS OTHERWISE SPECIFIED:
DIMENSIONS ARE IN: INCHES[mm]
TOLERANCES: ANGULAR: $\pm 2^\circ$
TWO PLACE DECIMAL: $\pm .010$
THREE PLACE DECIMAL: $\pm .005$
PRINTED GRAPHICS: $\pm .010$

PROPRIETARY AND CONFIDENTIAL
THE INFORMATION CONTAINED IN THIS
DRAWING IS THE SOLE PROPERTY OF
POLYCASE. ANY REPRODUCTION IN PART
OR AS A WHOLE WITHOUT THE WRITTEN
PERMISSION OF POLYCASE IS PROHIBITED.
CAD FILE: WP-23BF*15-PCB

PART NO.
WP-23BF*15-PCB
MATERIAL

FLAME RATING

SIZE
A

polycase
1305 CHESTER IND. PARKWAY AVON, OHIO 44011-1083 U.S.A.
PH: 1-800-248-1233, 440-934-0444 FAX: 440-934-0088

PCB TEMPLATE FOR WP-
23BF*15

REV
-

REV.	DESCRIPTION	ZONE	BY	APPR'D	DATE
REVISIONS					

5

4

3

2

1

SCALE: 1:1



SHEET 1 OF 1

Enable 3D View