

IR2110(-1-2)(S)PbF/IR2113(-1-2)(S)PbF

HIGH AND LOW SIDE DRIVER

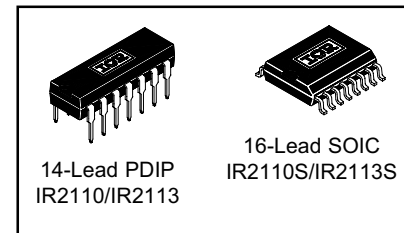
Features

- Floating channel designed for bootstrap operation
Fully operational to +500V or +600V
Tolerant to negative transient voltage
dV/dt immune
- Gate drive supply range from 10 to 20V
- Undervoltage lockout for both channels
- 3.3V logic compatible
Separate logic supply range from 3.3V to 20V
Logic and power ground $\pm 5V$ offset
- CMOS Schmitt-triggered inputs with pull-down
- Cycle by cycle edge-triggered shutdown logic
- Matched propagation delay for both channels
- Outputs in phase with inputs

Product Summary

V_{OFFSET} (IR2110)	500V max.
(IR2113)	600V max.
$I_{O+/-}$	2A / 2A
V_{OUT}	10 - 20V
$t_{\text{on/off}}$ (typ.)	120 & 94 ns
Delay Matching (IR2110)	10 ns max.
(IR2113)	20ns max.

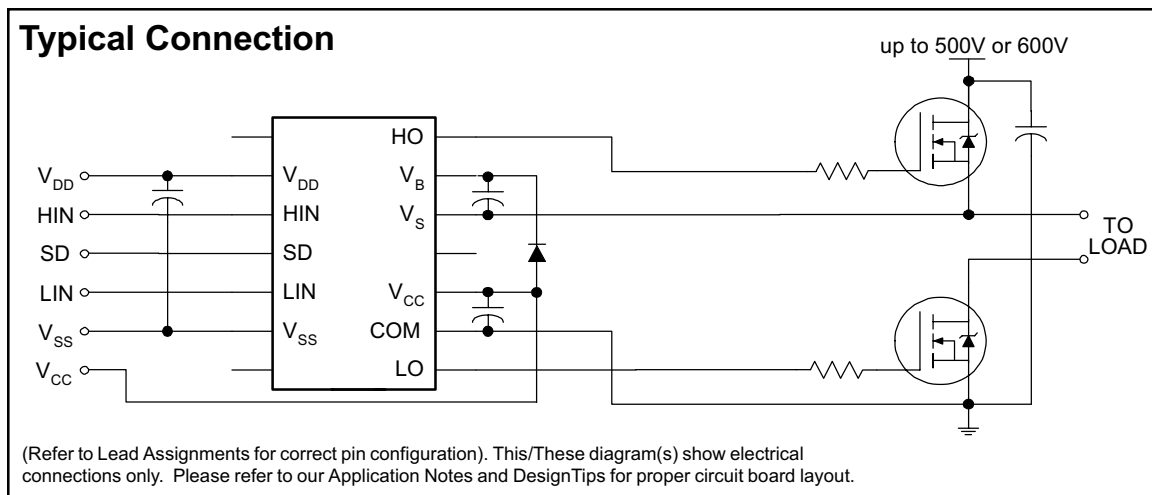
Packages



Description

The IR2110/IR2113 are high voltage, high speed power MOSFET and IGBT drivers with independent high and low side referenced output channels. Proprietary HVIC and latch immune CMOS technologies enable ruggedized monolithic construction. Logic inputs are compatible with standard CMOS or LSTTL output, down to 3.3V logic. The output drivers feature a high pulse current buffer stage designed for minimum driver cross-conduction. Propagation delays are matched to simplify use in high frequency applications. The floating channel can be used to drive an N-channel power MOSFET or IGBT in the high side configuration which operates up to 500 or 600 volts.

Typical Connection



Absolute Maximum Ratings

Absolute maximum ratings indicate sustained limits beyond which damage to the device may occur. All voltage parameters are absolute voltages referenced to COM. The thermal resistance and power dissipation ratings are measured under board mounted and still air conditions. Additional information is shown in Figures 28 through 35.

Symbol	Definition	Min.	Max.	Units
V_B	High side floating supply voltage (IR2110)	-0.3	525	V
	(IR2113)	-0.3	625	
V_S	High side floating supply offset voltage	$V_B - 25$	$V_B + 0.3$	
V_{HO}	High side floating output voltage	$V_S - 0.3$	$V_B + 0.3$	
V_{CC}	Low side fixed supply voltage	-0.3	25	
V_{LO}	Low side output voltage	-0.3	$V_{CC} + 0.3$	
V_{DD}	Logic supply voltage	-0.3	$V_{SS} + 25$	
V_{SS}	Logic supply offset voltage	$V_{CC} - 25$	$V_{CC} + 0.3$	
V_{IN}	Logic input voltage (HIN, LIN & SD)	$V_{SS} - 0.3$	$V_{DD} + 0.3$	
dV_S/dt	Allowable offset supply voltage transient (figure 2)	—	50	V/ns
P_D	Package power dissipation @ $T_A \leq +25^\circ\text{C}$ (14 lead DIP)	—	1.6	W
	(16 lead SOIC)	—	1.25	
R_{THJA}	Thermal resistance, junction to ambient (14 lead DIP)	—	75	$^\circ\text{C/W}$
	(16 lead SOIC)	—	100	
T_J	Junction temperature	—	150	$^\circ\text{C}$
T_S	Storage temperature	-55	150	
T_L	Lead temperature (soldering, 10 seconds)	—	300	

Recommended Operating Conditions

The input/output logic timing diagram is shown in figure 1. For proper operation the device should be used within the recommended conditions. The V_S and V_{SS} offset ratings are tested with all supplies biased at 15V differential. Typical ratings at other bias conditions are shown in figures 36 and 37.

Symbol	Definition	Min.	Max.	Units
V_B	High side floating supply absolute voltage	$V_S + 10$	$V_S + 20$	V
V_S	High side floating supply offset voltage (IR2110)	Note 1	500	
	(IR2113)	Note 1	600	
V_{HO}	High side floating output voltage	V_S	V_B	
V_{CC}	Low side fixed supply voltage	10	20	
V_{LO}	Low side output voltage	0	V_{CC}	
V_{DD}	Logic supply voltage	$V_{SS} + 3$	$V_{SS} + 20$	
V_{SS}	Logic supply offset voltage	-5 (Note 2)	5	
V_{IN}	Logic input voltage (HIN, LIN & SD)	V_{SS}	V_{DD}	$^\circ\text{C}$
T_A	Ambient temperature	-40	125	

Note 1: Logic operational for V_S of -4 to +500V. Logic state held for V_S of -4V to $-V_{BS}$. (Please refer to the Design Tip DT97-3 for more details).

Note 2: When $V_{DD} < 5V$, the minimum V_{SS} offset is limited to $-V_{DD}$.

Dynamic Electrical Characteristics

V_{BIAS} (V_{CC} , V_{BS} , V_{DD}) = 15V, C_L = 1000 pF, T_A = 25°C and V_{SS} = COM unless otherwise specified. The dynamic electrical characteristics are measured using the test circuit shown in Figure 3.

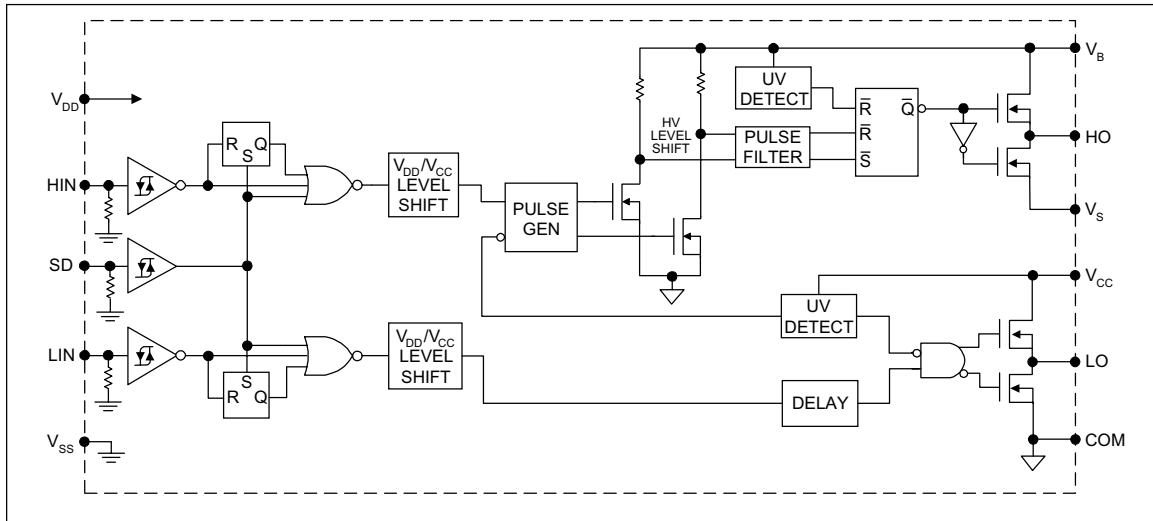
Symbol	Definition	Figure	Min.	Typ.	Max.	Units	Test Conditions
t_{on}	Turn-on propagation delay	7	—	120	150	ns	$V_S = 0V$
t_{off}	Turn-off propagation delay	8	—	94	125		$V_S = 500V/600V$
t_{sd}	Shutdown propagation delay	9	—	110	140		$V_S = 500V/600V$
t_r	Turn-on rise time	10	—	25	35		
t_f	Turn-off fall time	11	—	17	25		
MT	Delay matching, HS & LS turn-on/off	(IR2110) (IR2113)	—	—	—	10 20	

Static Electrical Characteristics

V_{BIAS} (V_{CC} , V_{BS} , V_{DD}) = 15V, T_A = 25°C and V_{SS} = COM unless otherwise specified. The V_{IN} , V_{TH} and I_{IN} parameters are referenced to V_{SS} and are applicable to all three logic input leads: HIN, LIN and SD. The V_O and I_O parameters are referenced to COM and are applicable to the respective output leads: HO or LO.

Symbol	Definition	Figure	Min.	Typ.	Max.	Units	Test Conditions
V_{IH}	Logic "1" input voltage	12	9.5	—	—	V	
V_{IL}	Logic "0" input voltage	13	—	—	6.0		
V_{OH}	High level output voltage, $V_{BIAS} - V_O$	14	—	—	1.2		$I_O = 0A$
V_{OL}	Low level output voltage, V_O	15	—	—	0.1		$I_O = 0A$
I_{LK}	Offset supply leakage current	16	—	—	50	μA	$V_B = V_S = 500V/600V$
I_{QBS}	Quiescent V_{BS} supply current	17	—	125	230		$V_{IN} = 0V$ or V_{DD}
I_{QCC}	Quiescent V_{CC} supply current	18	—	180	340		$V_{IN} = 0V$ or V_{DD}
I_{QDD}	Quiescent V_{DD} supply current	19	—	15	30		$V_{IN} = 0V$ or V_{DD}
I_{IN+}	Logic "1" input bias current	20	—	20	40		$V_{IN} = V_{DD}$
I_{IN-}	Logic "0" input bias current	21	—	—	1.0		$V_{IN} = 0V$
V_{BSUV+}	V_{BS} supply undervoltage positive going threshold	22	7.5	8.6	9.7	V	
V_{BSUV-}	V_{BS} supply undervoltage negative going threshold	23	7.0	8.2	9.4		
V_{CCUV+}	V_{CC} supply undervoltage positive going threshold	24	7.4	8.5	9.6		
V_{CCUV-}	V_{CC} supply undervoltage negative going threshold	25	7.0	8.2	9.4		
I_{O+}	Output high short circuit pulsed current	26	2.0	2.5	—	A	$V_O = 0V$, $V_{IN} = V_{DD}$ $PW \leq 10 \mu s$
I_{O-}	Output low short circuit pulsed current	27	2.0	2.5	—		$V_O = 15V$, $V_{IN} = 0V$ $PW \leq 10 \mu s$

Functional Block Diagram



Lead Definitions

Symbol	Description
V _{DD}	Logic supply
HIN	Logic input for high side gate driver output (HO), in phase
SD	Logic input for shutdown
LIN	Logic input for low side gate driver output (LO), in phase
V _{SS}	Logic ground
V _B	High side floating supply
HO	High side gate drive output
V _S	High side floating supply return
V _{CC}	Low side supply
LO	Low side gate drive output
COM	Low side return

IR2110(-1-2)(S)PbF/IR2113(-1-2)(S)PbF

Lead Assignments

<table><tr><td>8</td><td></td><td>HO</td><td>7</td></tr><tr><td>9</td><td>VDD</td><td>VB</td><td>6</td></tr><tr><td>10</td><td>HIN</td><td>VS</td><td>5</td></tr><tr><td>11</td><td>SD</td><td></td><td>4</td></tr><tr><td>12</td><td>LIN</td><td>VCC</td><td>3</td></tr><tr><td>13</td><td>VSS</td><td>COM</td><td>2</td></tr><tr><td>14</td><td></td><td>LO</td><td>1</td></tr></table> <p>14 Lead PDIP IR2110/IR2113</p>	8		HO	7	9	VDD	VB	6	10	HIN	VS	5	11	SD		4	12	LIN	VCC	3	13	VSS	COM	2	14		LO	1	<table><tr><td>9</td><td></td><td>HO</td><td>8</td></tr><tr><td>10</td><td></td><td>VB</td><td>7</td></tr><tr><td>11</td><td>VDD</td><td>VS</td><td>6</td></tr><tr><td>12</td><td>HIN</td><td></td><td></td></tr><tr><td>13</td><td>SD</td><td></td><td></td></tr><tr><td>14</td><td>LIN</td><td>VCC</td><td>3</td></tr><tr><td>15</td><td>VSS</td><td>COM</td><td>2</td></tr><tr><td>16</td><td></td><td>LO</td><td>1</td></tr></table> <p>16 Lead SOIC (Wide Body) IR2110S/IR2113S</p>	9		HO	8	10		VB	7	11	VDD	VS	6	12	HIN			13	SD			14	LIN	VCC	3	15	VSS	COM	2	16		LO	1
8		HO	7																																																										
9	VDD	VB	6																																																										
10	HIN	VS	5																																																										
11	SD		4																																																										
12	LIN	VCC	3																																																										
13	VSS	COM	2																																																										
14		LO	1																																																										
9		HO	8																																																										
10		VB	7																																																										
11	VDD	VS	6																																																										
12	HIN																																																												
13	SD																																																												
14	LIN	VCC	3																																																										
15	VSS	COM	2																																																										
16		LO	1																																																										
<table><tr><td>8</td><td></td><td>HO</td><td>7</td></tr><tr><td>9</td><td>VDD</td><td>VB</td><td>6</td></tr><tr><td>10</td><td>HIN</td><td>VS</td><td>5</td></tr><tr><td>11</td><td>SD</td><td></td><td></td></tr><tr><td>12</td><td>LIN</td><td>VCC</td><td>3</td></tr><tr><td>13</td><td>VSS</td><td>COM</td><td>2</td></tr><tr><td>14</td><td></td><td>LO</td><td>1</td></tr></table> <p>14 Lead PDIP w/o lead 4 IR2110-1/IR2113-1</p>	8		HO	7	9	VDD	VB	6	10	HIN	VS	5	11	SD			12	LIN	VCC	3	13	VSS	COM	2	14		LO	1	<table><tr><td>8</td><td></td><td>HO</td><td>7</td></tr><tr><td>9</td><td>VDD</td><td>VB</td><td>6</td></tr><tr><td>10</td><td>HIN</td><td>VS</td><td></td></tr><tr><td>11</td><td>SD</td><td></td><td></td></tr><tr><td>12</td><td>LIN</td><td>VCC</td><td>3</td></tr><tr><td>13</td><td>VSS</td><td>COM</td><td>2</td></tr><tr><td>14</td><td></td><td>LO</td><td>1</td></tr></table> <p>14 Lead PDIP w/o leads 4 & 5 IR2110-2/IR2113-2</p>	8		HO	7	9	VDD	VB	6	10	HIN	VS		11	SD			12	LIN	VCC	3	13	VSS	COM	2	14		LO	1				
8		HO	7																																																										
9	VDD	VB	6																																																										
10	HIN	VS	5																																																										
11	SD																																																												
12	LIN	VCC	3																																																										
13	VSS	COM	2																																																										
14		LO	1																																																										
8		HO	7																																																										
9	VDD	VB	6																																																										
10	HIN	VS																																																											
11	SD																																																												
12	LIN	VCC	3																																																										
13	VSS	COM	2																																																										
14		LO	1																																																										
Part Number																																																													

IR2110(-1-2)(S)PbF/IR2113(-1-2)(S)PbF

International
IR Rectifier

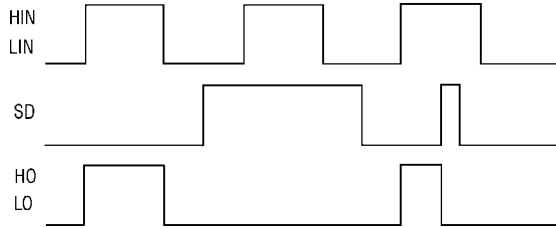


Figure 1. Input/Output Timing Diagram

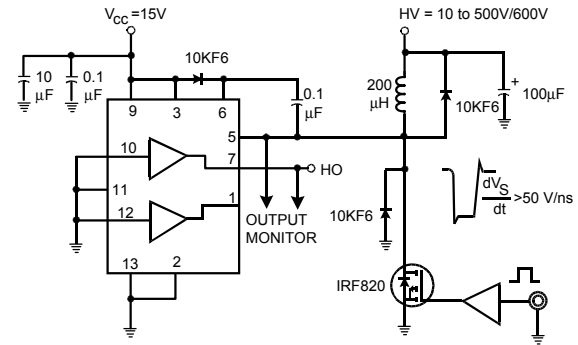


Figure 2. Floating Supply Voltage Transient Test Circuit

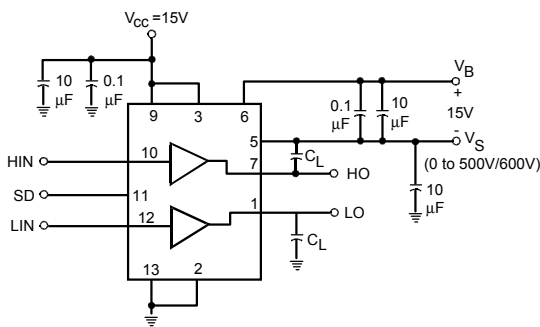


Figure 3. Switching Time Test Circuit

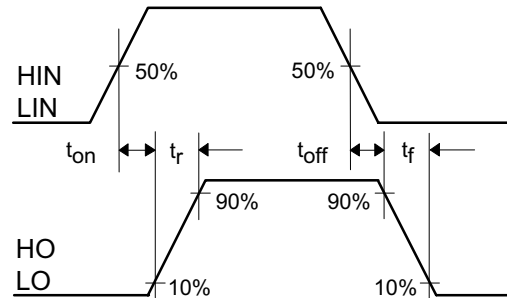


Figure 4. Switching Time Waveform Definition

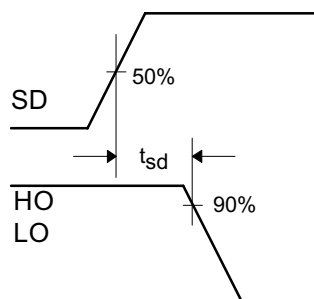


Figure 5. Shutdown Waveform Definitions

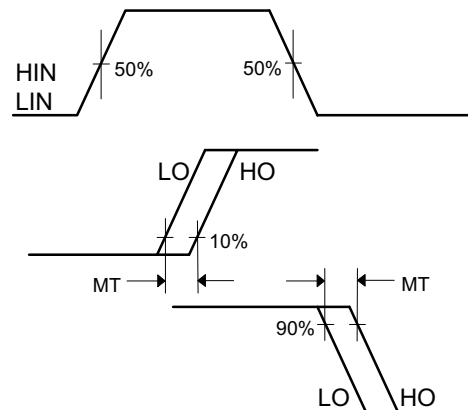


Figure 6. Delay Matching Waveform Definitions

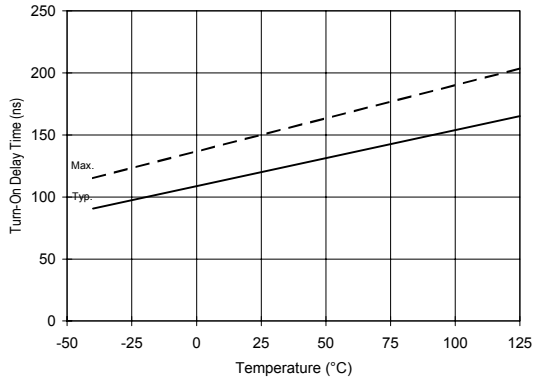


Figure 7A. Turn-On Time vs. Temperature

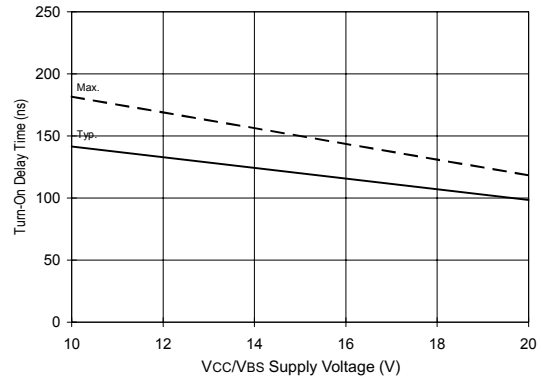


Figure 7B. Turn-On Time vs. Vcc/Vbs Supply Voltage

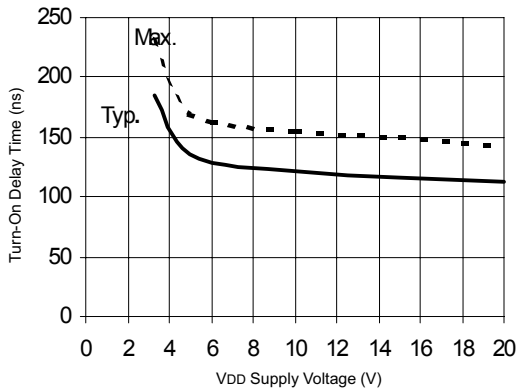


Figure 7C. Turn-On Time vs. VDD Supply Voltage

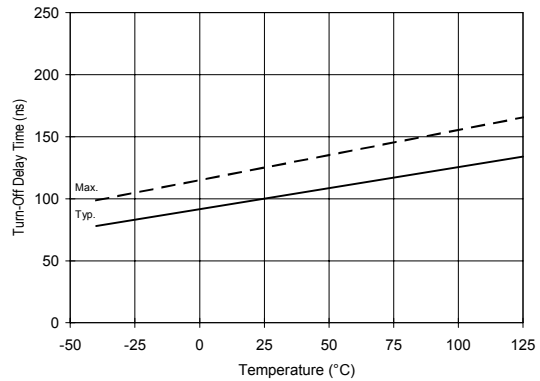


Figure 8A. Turn-Off Time vs. Temperature

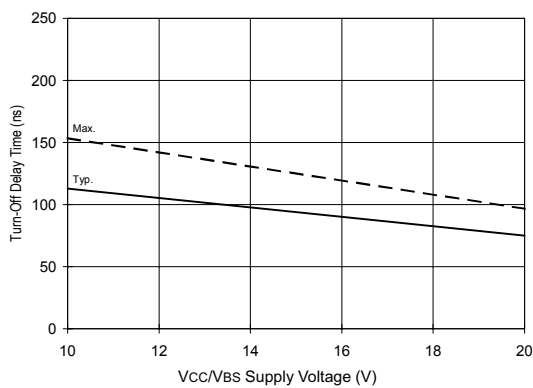


Figure 8B. Turn-Off Time vs. Vcc/Vbs Supply Voltage

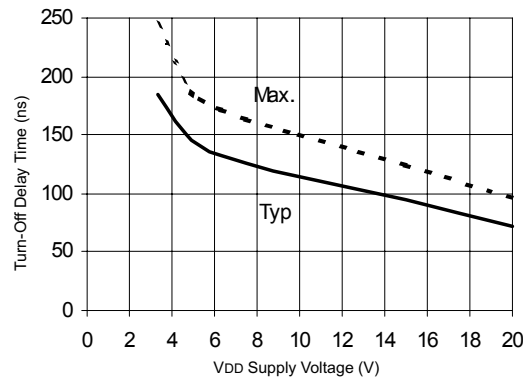


Figure 8C. Turn-Off Time vs. VDD Supply Voltage

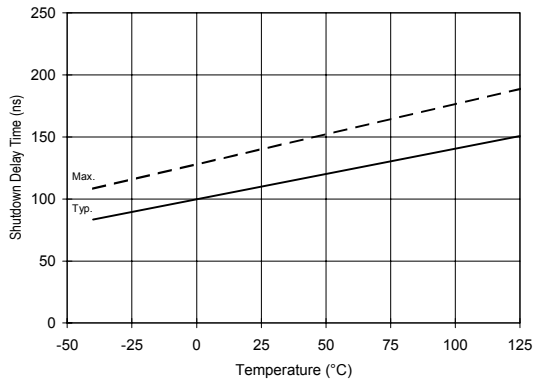


Figure 9A. Shutdown Time vs. Temperature

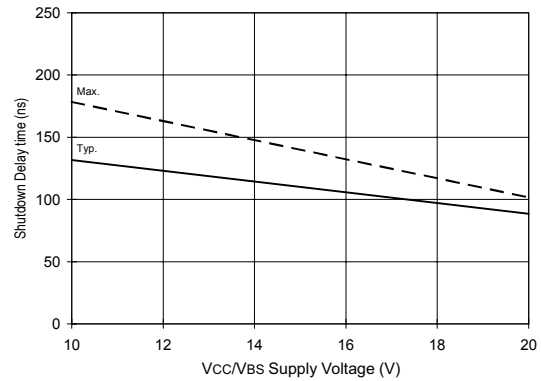


Figure 9B. Shutdown Time vs. Vcc/Vbs Supply Voltage

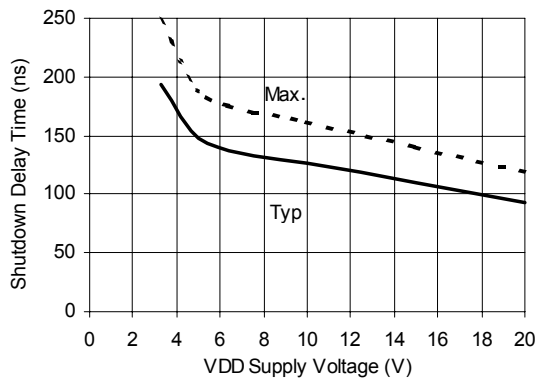


Figure 9C. Shutdown Time vs. VDD Supply Voltage

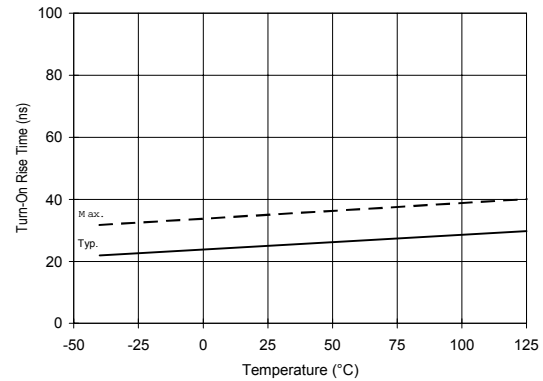


Figure 10A. Turn-On Rise Time vs. Temperature

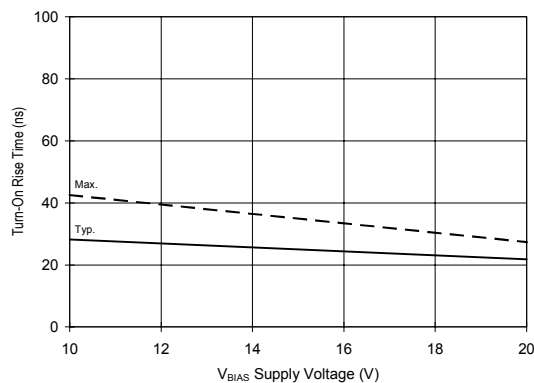


Figure 10B. Turn-On Rise Time vs. Voltage

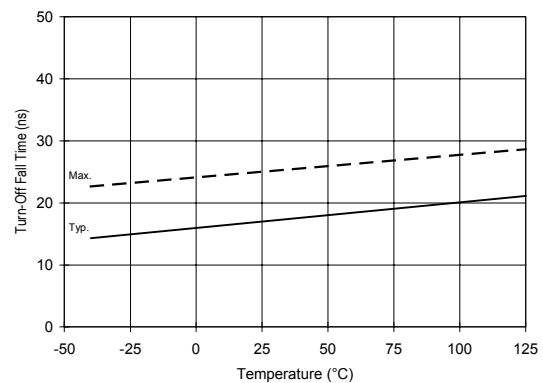


Figure 11A. Turn-Off Fall Time vs. Temperature

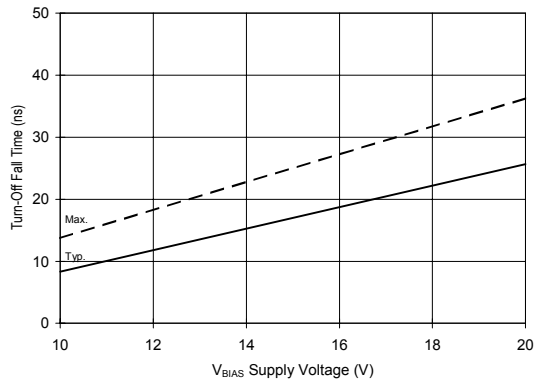


Figure 11B. Turn-Off Fall Time vs. Voltage

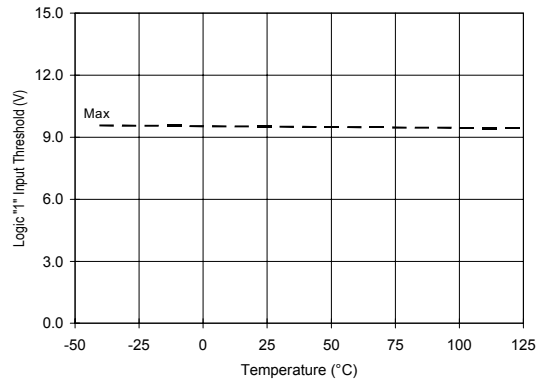


Figure 12A. Logic "1" Input Threshold vs. Temperature

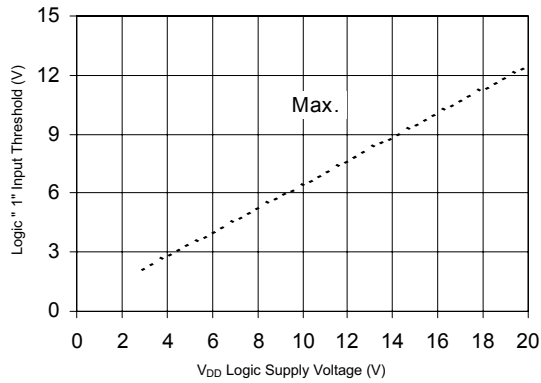


Figure 12B. Logic "1" Input Threshold vs. Voltage

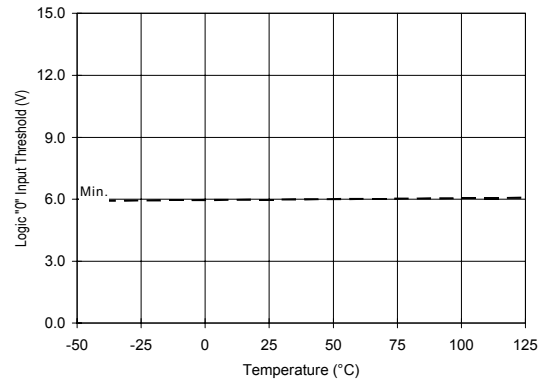


Figure 13A. Logic "0" Input Threshold vs. Temperature

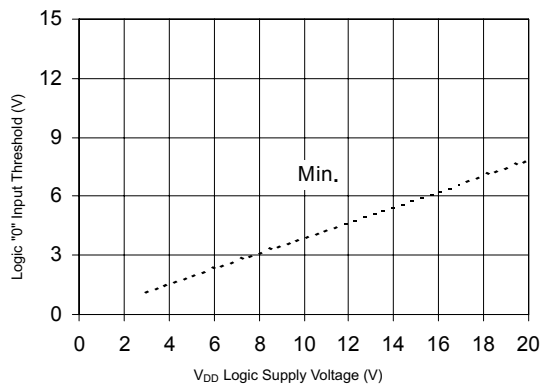


Figure 13B. Logic "0" Input Threshold vs. Voltage

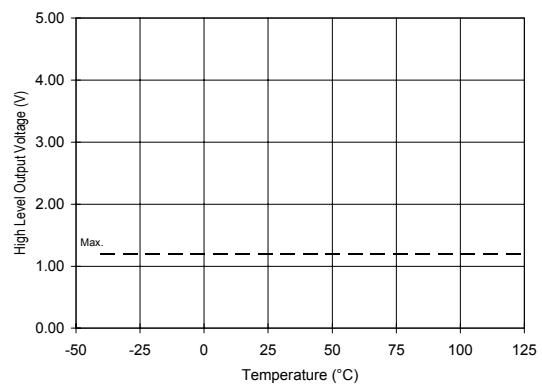


Figure 14A. High Level Output vs. Temperature

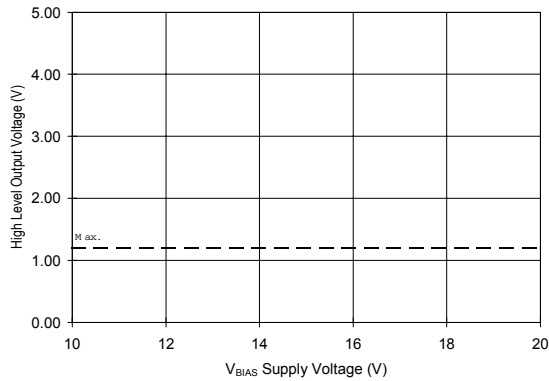


Figure 14B. High Level Output vs. Voltage

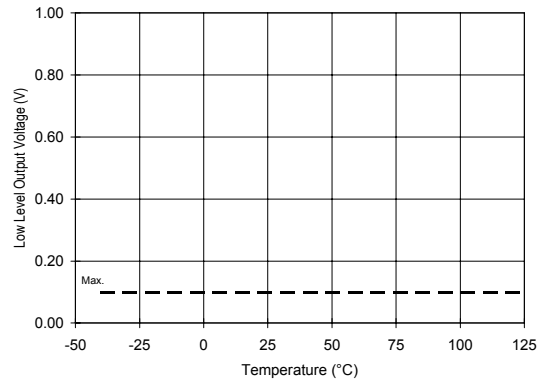


Figure 15A. Low Level Output vs. Temperature

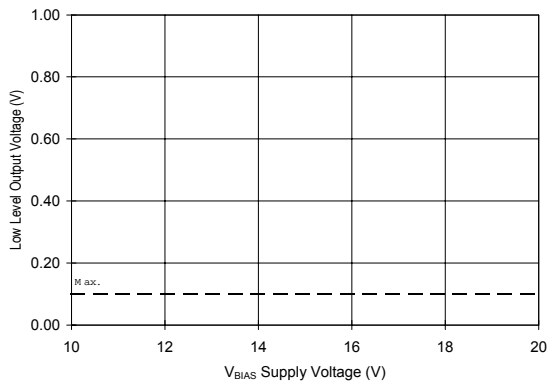


Figure 15B. Low Level Output vs. Voltage

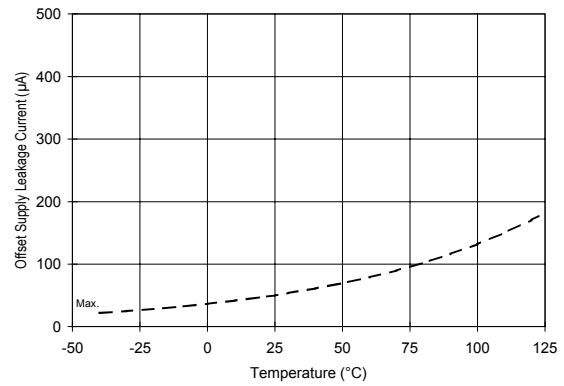


Figure 16A. Offset Supply Current vs. Temperature

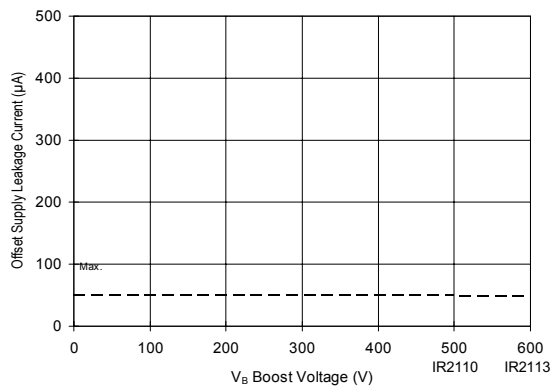


Figure 16B. Offset Supply Current vs. Voltage

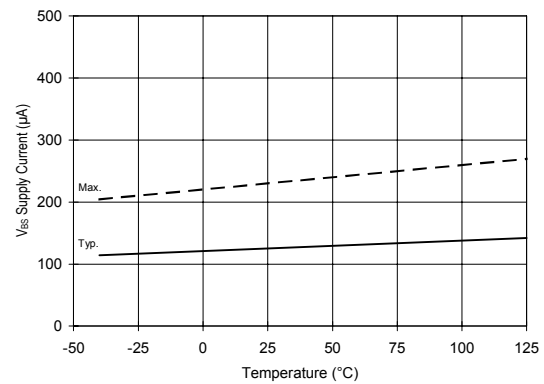


Figure 17A. V_{BS} Supply Current vs. Temperature

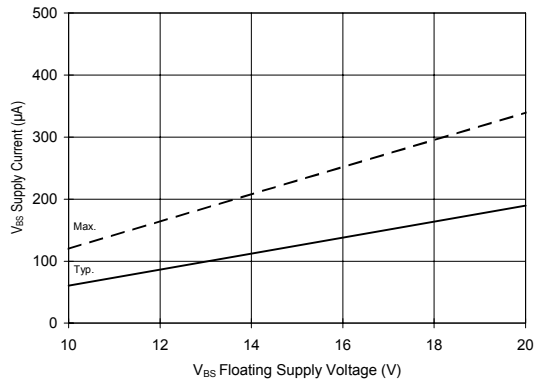


Figure 17B. V_{BS} Supply Current vs. Voltage

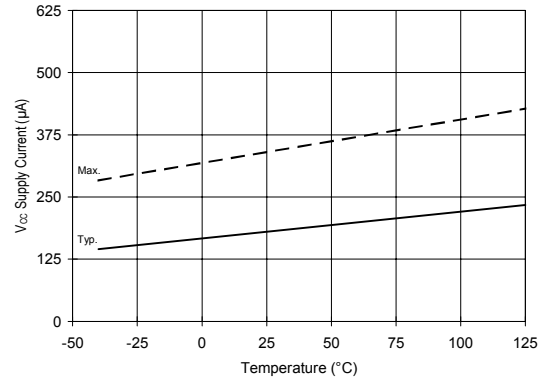


Figure 18A. V_{CC} Supply Current vs. Temperature

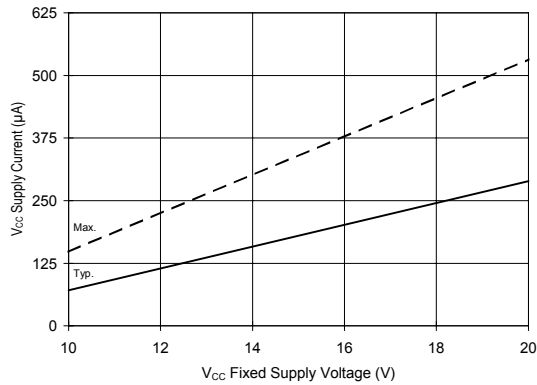


Figure 18B. V_{CC} Supply Current vs. Voltage

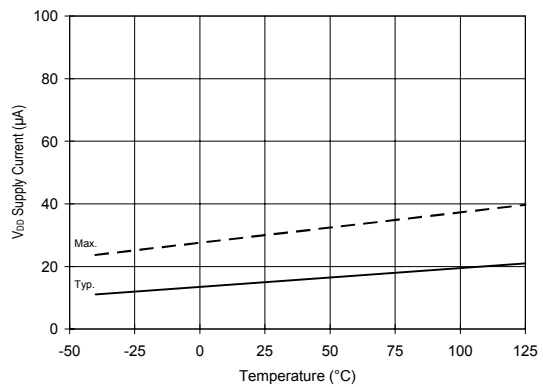


Figure 19A. V_{DD} Supply Current vs. Temperature

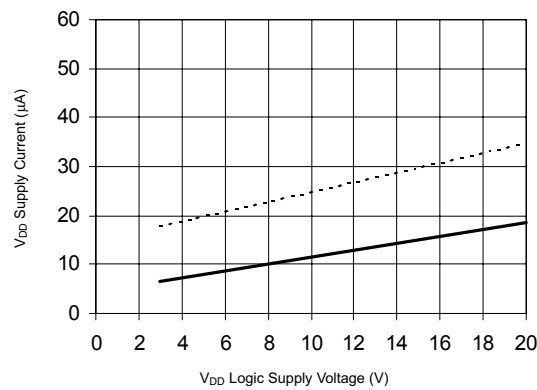


Figure 19B. V_{DD} Supply Current vs. V_{DD} Voltage

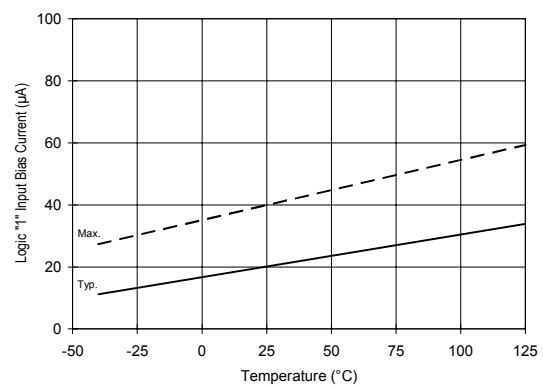


Figure 20A. Logic "1" Input Current vs. Temperature

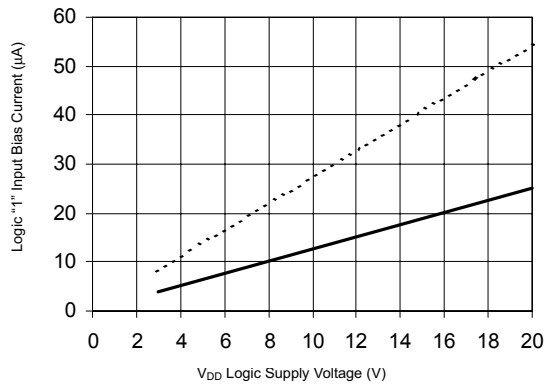


Figure 20B. Logic "1" Input Current vs. V_{DD} Voltage

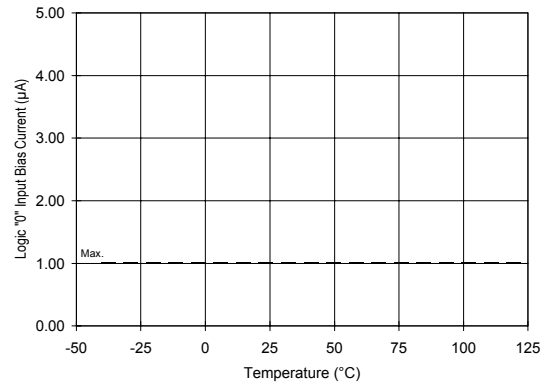


Figure 21A. Logic "0" Input Current vs. Temperature

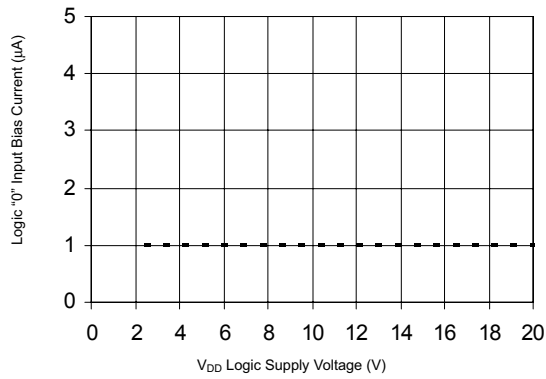


Figure 21B. Logic "0" Input Current vs. V_{DD} Voltage

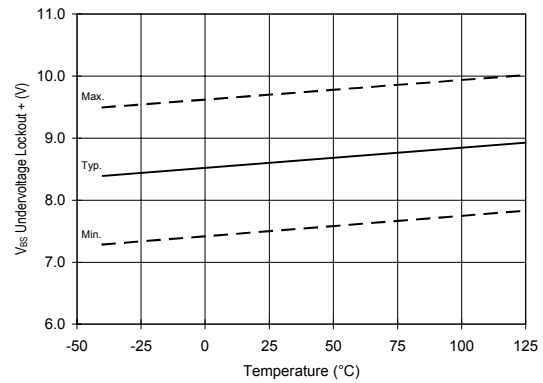


Figure 22. V_{BS} Undervoltage Lockout (+) vs. Temperature

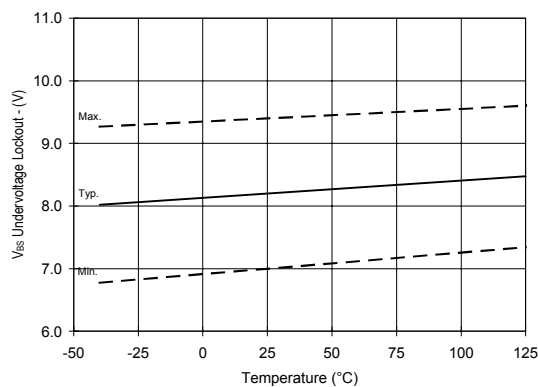


Figure 23. V_{BS} Undervoltage Lockout (-) vs. Temperature

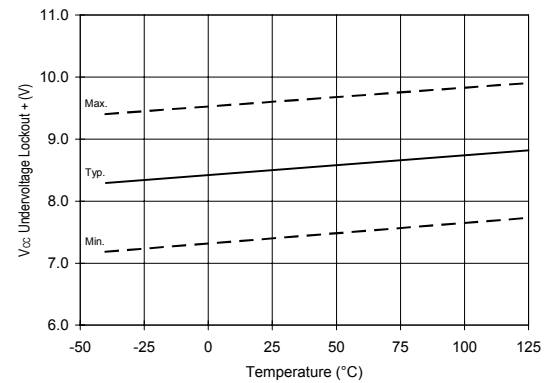


Figure 24. V_{CC} Undervoltage Lockout (+) vs. Temperature

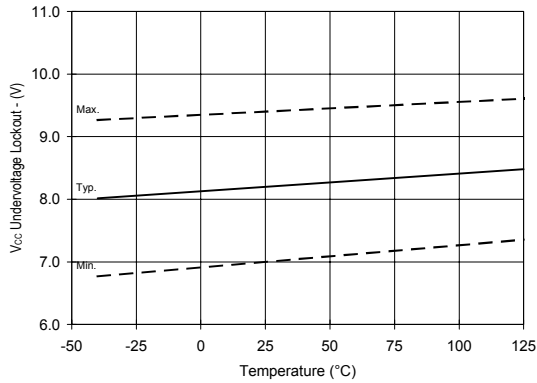


Figure 25. Vcc Undervoltage (-) vs. Temperature

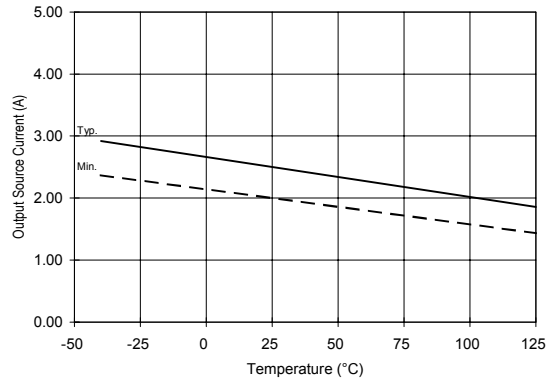


Figure 26A. Output Source Current vs. Temperature

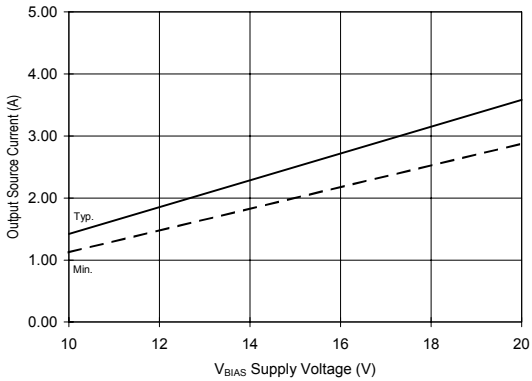


Figure 26B. Output Source Current vs. Voltage

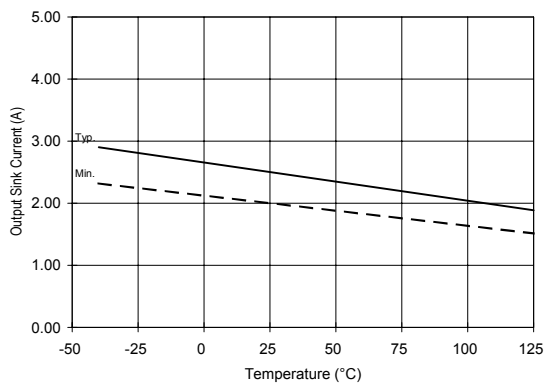


Figure 27A. Output Sink Current vs. Temperature

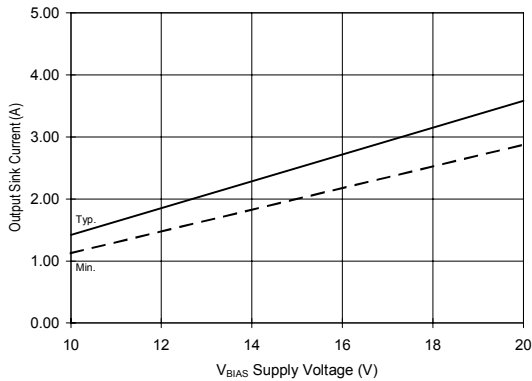


Figure 27B. Output Sink Current vs. Voltage

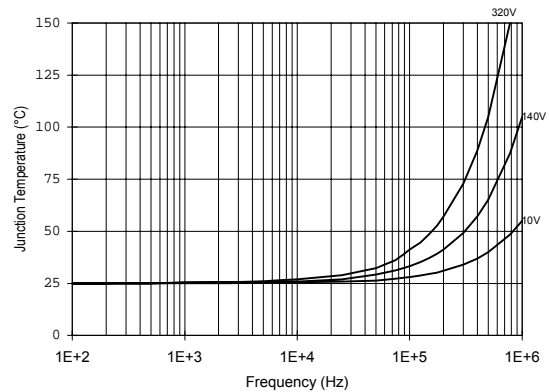


Figure 28. IR2110/IR2113 T_J vs. Frequency
(IRFBC20) $R_{GATE} = 33\Omega$, $V_{CC} = 15V$

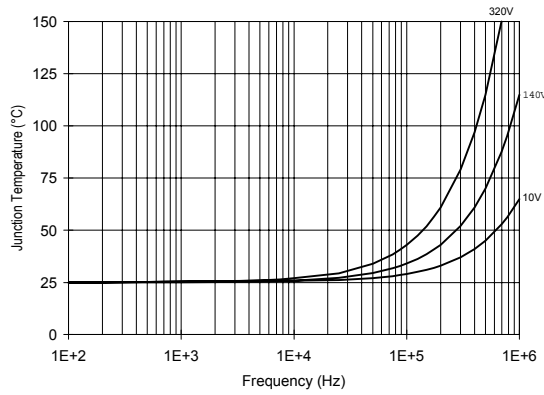


Figure 29. IR2110/IT2113 T_J vs. Frequency (IRFBC30) $R_{\text{GATE}} = 22\Omega$, $V_{\text{CC}} = 15\text{V}$

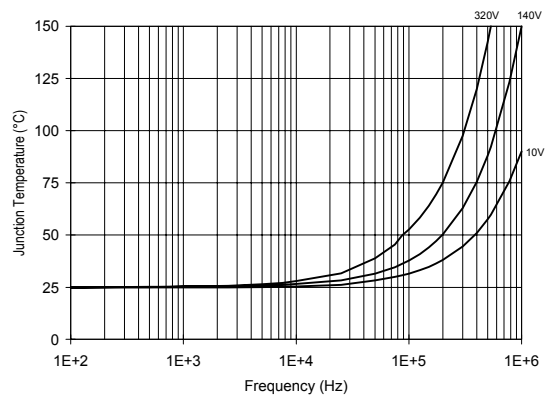


Figure 30. IR2110/IR2113 T_J vs. Frequency (IRFBC40) $R_{\text{GATE}} = 15\Omega$, $V_{\text{CC}} = 15\text{V}$

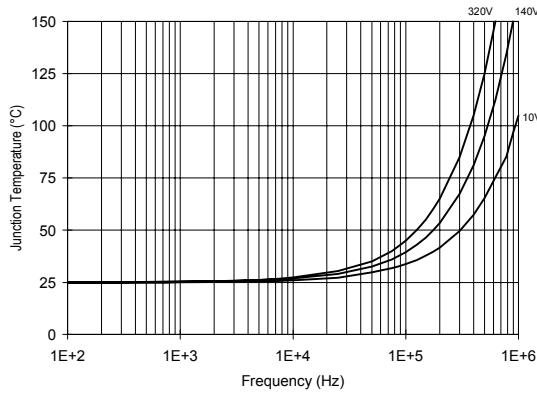


Figure 31. IR2110/IR2113 T_J vs. Frequency (IRFPE50) $R_{\text{GATE}} = 10\Omega$, $V_{\text{CC}} = 15\text{V}$

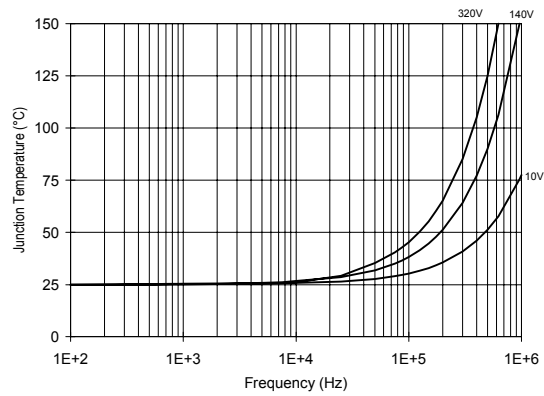


Figure 32. IR2110S/IR2113S T_J vs. Frequency (IRFBC20) $R_{\text{GATE}} = 33\Omega$, $V_{\text{CC}} = 15\text{V}$

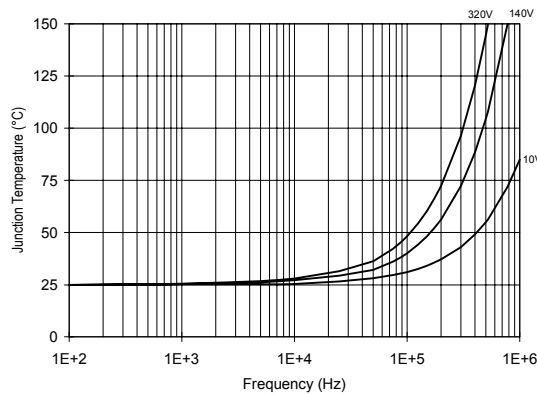


Figure 33. IR2110S/IR2113S T_J vs. Frequency (IRFBC30) $R_{\text{GATE}} = 22\Omega$, $V_{\text{CC}} = 15\text{V}$

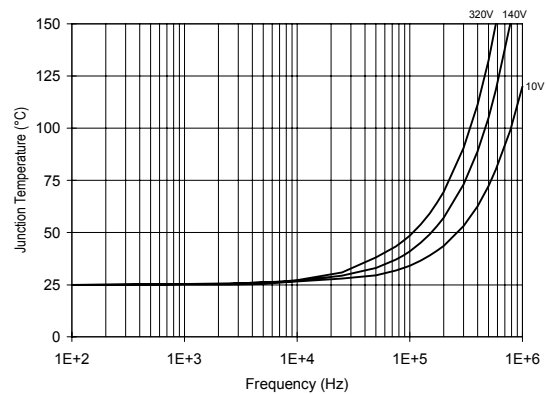


Figure 34. IR2110S/IR2113S T_J vs. Frequency (IRFBC40) $R_{\text{GATE}} = 15\Omega$, $V_{\text{CC}} = 15\text{V}$

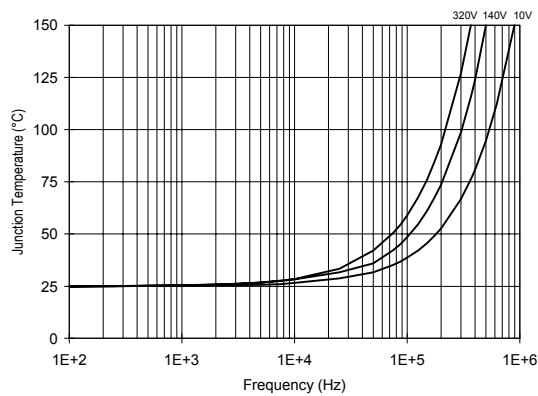


Figure 35. IR2110S/IR2113S T_J vs. Frequency (IRFPE50) $R_{GATE} = 10\Omega$, $V_{CC} = 15V$

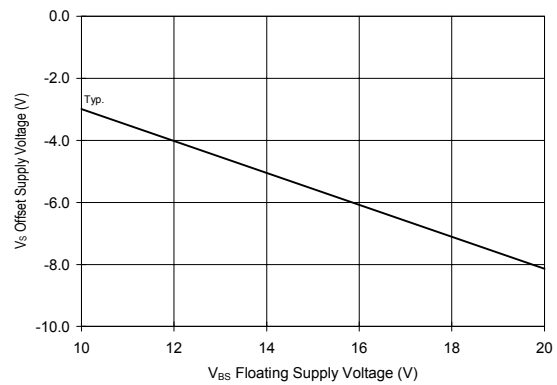


Figure 36. Maximum V_S Negative Offset vs. V_{BS} Supply Voltage

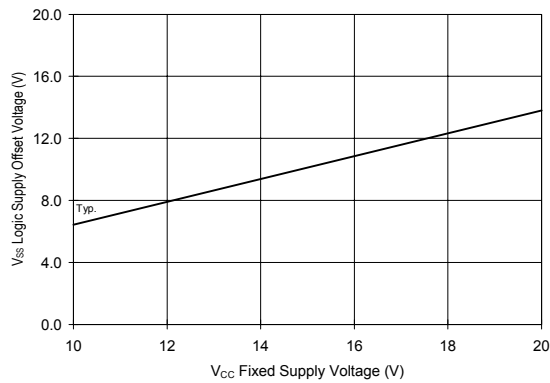
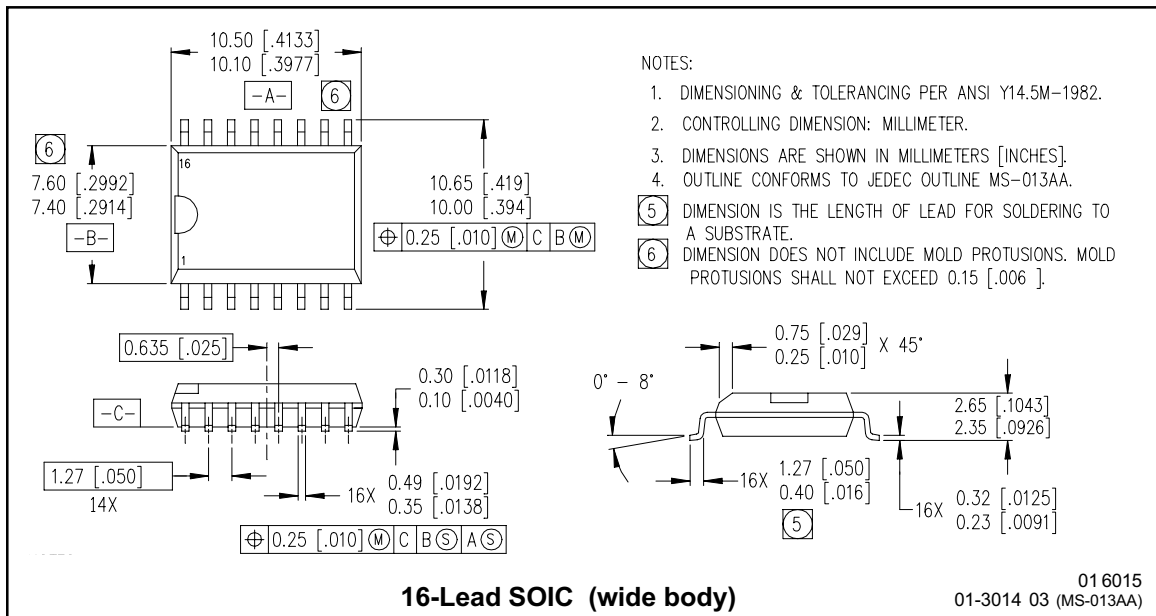
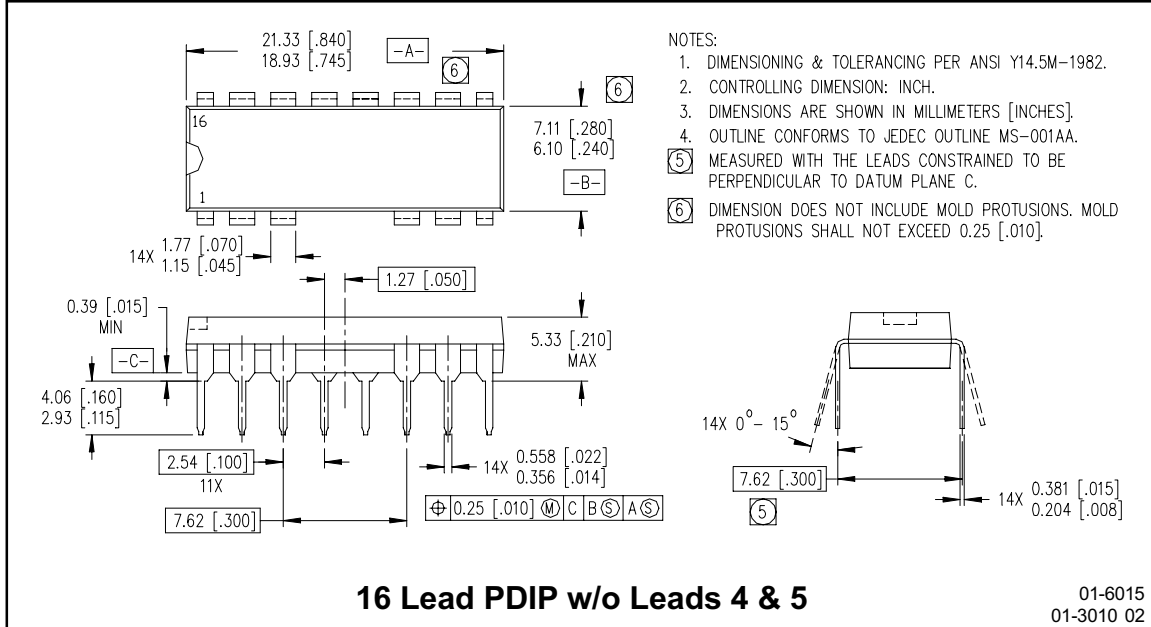


Figure 37. Maximum V_{SS} Positive Offset vs. V_{CC} Supply Voltage

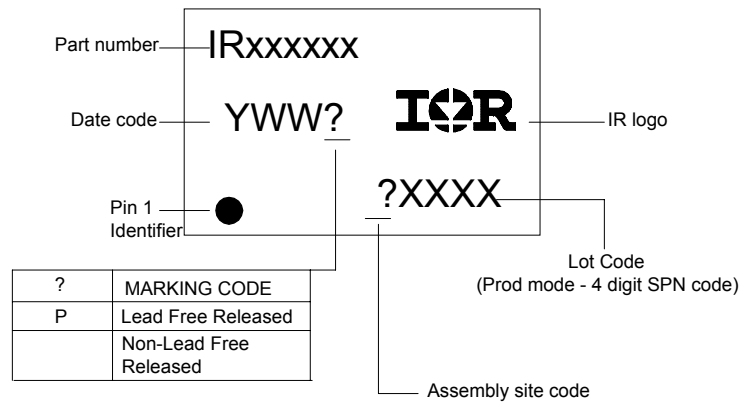
IR2110(-1-2)(S)PbF/IR2113(-1-2)(S)PbF



IR2110(-1-2)(S)PbF/IR2113(-1-2)(S)PbF

International
IR Rectifier

LEADFREE PART MARKING INFORMATION



ORDER INFORMATION

Part only available Lead Free

14-Lead PDIP IR2110 order IR2110PbF
14-Lead PDIP IR2110-1 order IR2110-1PbF
14-Lead PDIP IR2110-2 order IR2110-2PbF
14-Lead PDIP IR2113 order IR2113PbF
14-Lead PDIP IR2113-1 order IR2113-1PbF
14-Lead PDIP IR2113-2 order IR2113-2PbF
16-Lead SOIC IR2110S order IR2110SPbF
16-Lead SOIC IR2113S order IR2113SPbF

International
IR Rectifier

IR WORLD HEADQUARTERS: 233 Kansas St., El Segundo, California 90245 Tel: (310) 252-7105

This product has been qualified per industrial level

Data and specifications subject to change without notice 3/23/2005