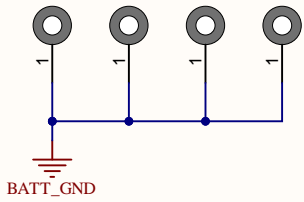

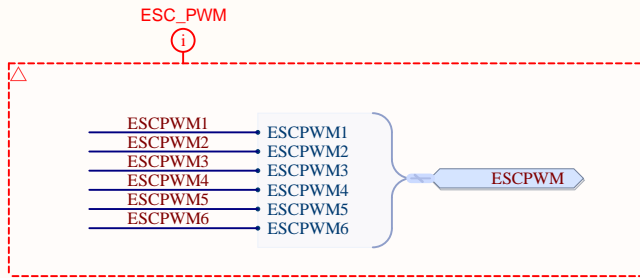


Mounting Holes

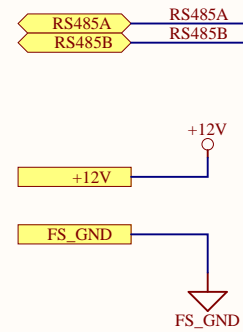


APPROVALS		DATE	PROJECT		<div>SOARING</div> <div>SM</div>		300 Continental Blvd #300 El Segundo, CA 90245	
ENG: RRV		4/10/24	G25					
DSN: RRV		4/10/24	PROJECT REVISION:		DOCUMENT REVISION:		DESIGN ITEM:	
CHK: *		--/--/--	TITLE					
REFERENCE DOCUMENTS			ESC DISTRIBUTOR - PHASE II (TOP)					
BOM:								
ASSY DWG:			SIZE	CAGE CODE	DWG NO.			REV
FAB DWG:			B	8MHX9	-			-
PCB DWG:			SCALE	FILE NAME			Overview.SchDoc	SHEET 1 OF 5

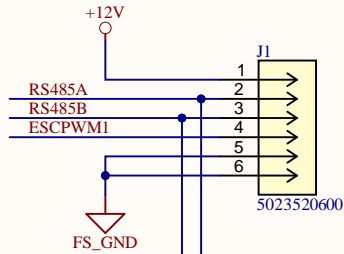
REVISION	DESCRIPTION	DATE	APPROVED



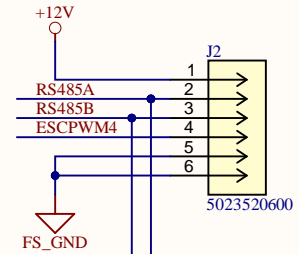
ESC Interface Board Connectors



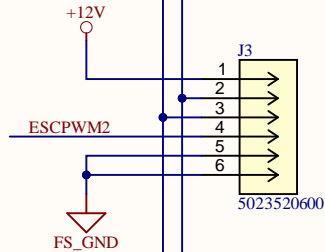
Motor #1



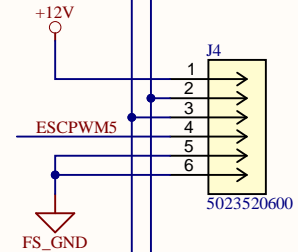
Motor #4



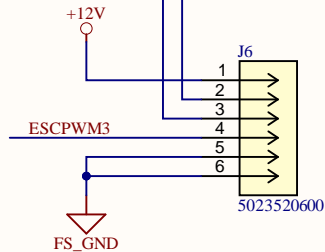
Motor #2



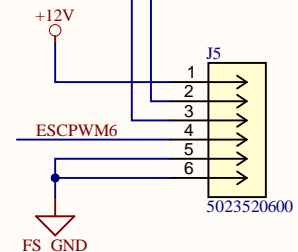
Motor #5




Motor #3



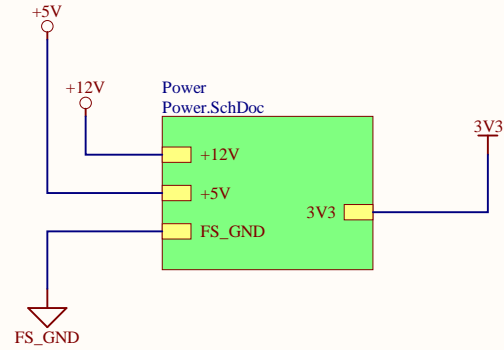
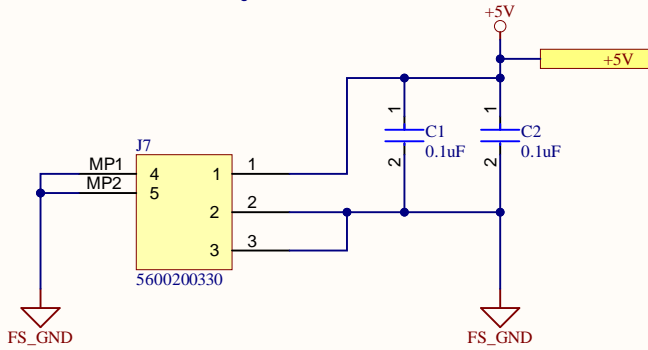
Motor #6



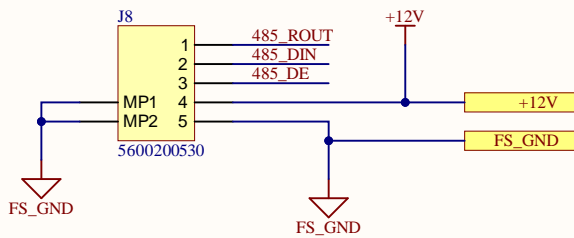
APPROVALS		DATE	PROJECT		<div>SOARING</div> <div>SM</div>		300 Continental Blvd #300 El Segundo, CA 90245	
ENG:	RRV	4/10/24	*					
DSN:	RRV	4/10/24	PROJECT REVISION:		DOCUMENT REVISION:		DESIGN ITEM:	
CHK:	*	--/--/--	TITLE					
REFERENCE DOCUMENTS			ESC INTERFACES					
BOM:								
ASSY DWG:			SIZE	CAGE CODE	DWG NO.			REV
FAB DWG:			B	8MHX9				-
PCB DWG:			SCALE:	FILE NAME	ESCInterface.SchDoc			SHEET 2 OF 5

3.3V Power & Power Indicators

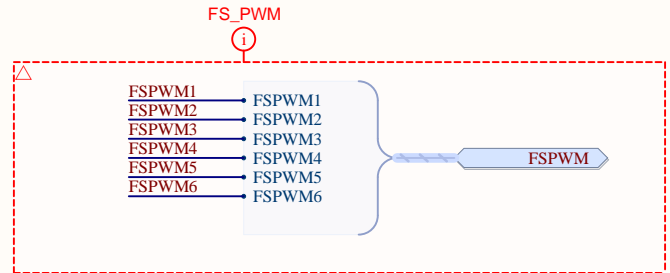
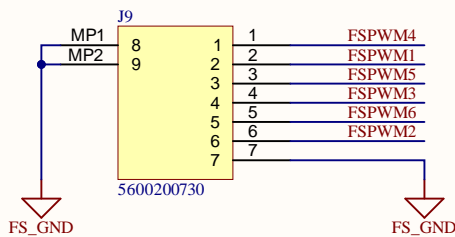
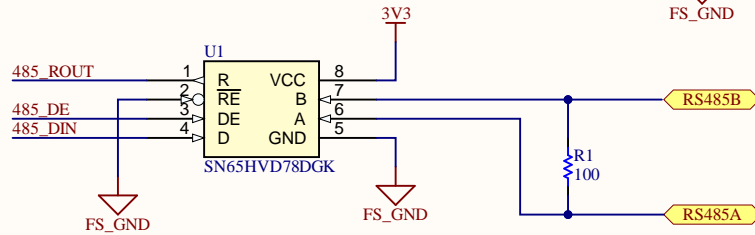
Primary +5V




Flight-stack Connector



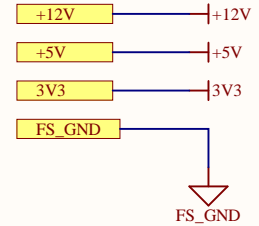
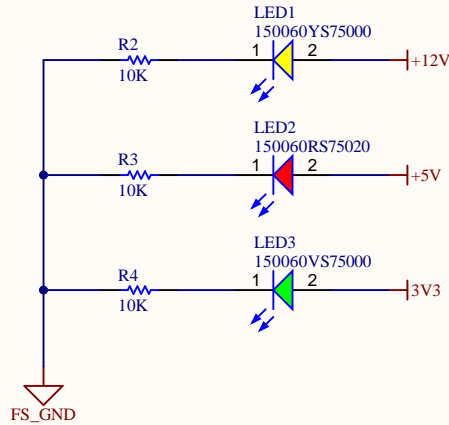
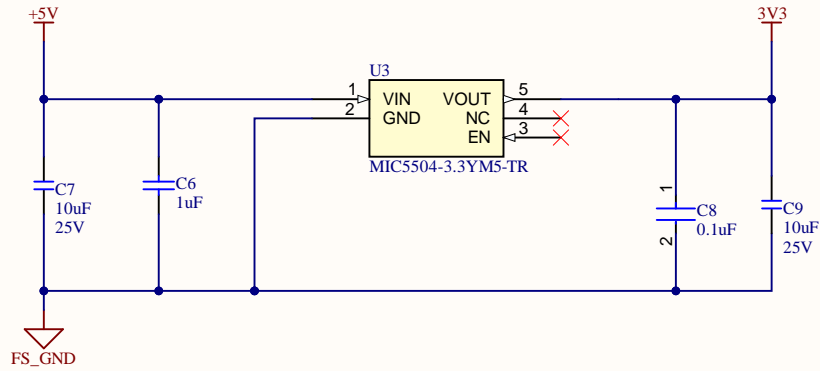
RS-485 Driver




APPROVALS		DATE	PROJECT		<div>SOARING</div>		300 Continental Blvd #300 El Segundo, CA 90245	
ENG:	RRV	4/10/24	*		PROJECT REVISION:DOCUMENT REVISION:DESIGN ITEM:			
DSN:	RRV	4/10/24						
CHK:	*	--/--/--						
REFERENCE DOCUMENTS			TITLE Flight-Stack Interface					
BOM:								
ASSY DWG:								
FAB DWG:								
PCB DWG:			SIZE	CAGE CODE	DWG NO.		REV	
			B	8MHX9			-	
			SCALE:		FILE NAME		FSInterface.SchDoc	
					SHEET		3	OF 5

THIS DOCUMENT AND THE DATA DISCLOSED HEREIN OR
HEREWITH IS THE PROPERTY OF SOARING TECHNOLOGIES INC.

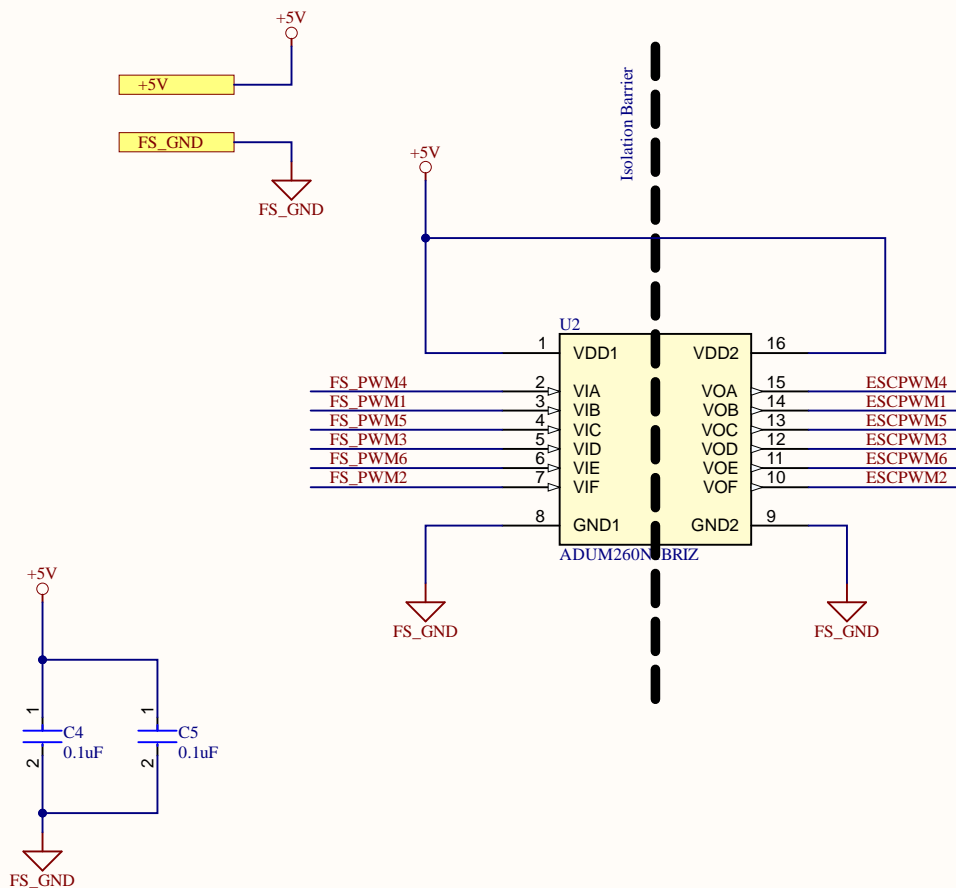
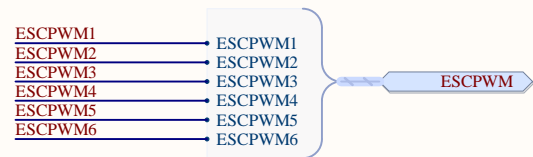
REVISION	DESCRIPTION	DATE	APPROVED




APPROVALS		DATE	PROJECT		<div>SOARING</div> <div>SM</div>		300 Continental Blvd	
ENG:	RRV	4/10/24	G25				#300	
DSN:	RRV	4/10/24	PROJECT REVISION:		DOCUMENT REVISION:		DESIGN ITEM:	
CHK:	*	--/--/--	TITLE					
REFERENCE DOCUMENTS			POWER & INDICATORS					
BOM:								
ASSY DWG:			SIZE	CAGE CODE	DWG NO.			REV
FAB DWG:			B	8MHX9	-			-
PCB DWG:			SCALE	FILE NAME			SHEET	OF
			1:1	Power.SchDoc			4	5

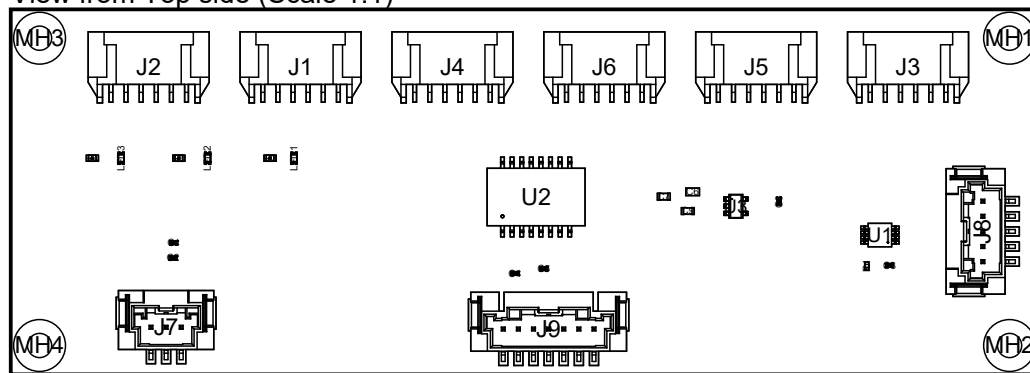
INPUTS

OUTPUTS

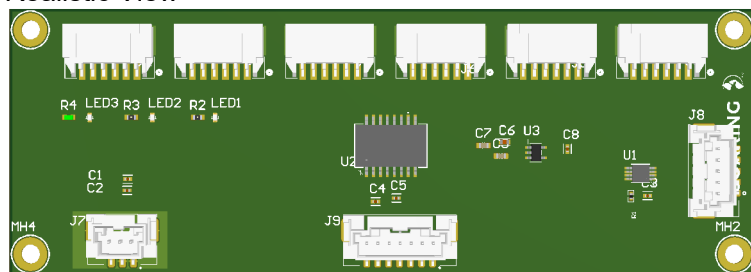


APPROVALS		DATE	PROJECT		<div>SOARING</div> <div>SM</div>		300 Continental Blvd	
ENG:	RRV	4/10/24	*				#300	
DSN:	RRV	4/10/24	PROJECT REVISION:		DOCUMENT REVISION:	DESIGN ITEM:		
CHK:	*	--/--/--	TITLE					El Segundo, CA 90245
REFERENCE DOCUMENTS			ISOLATION BUFFER					
BOM:								
ASSY DWG:			SIZE	CAGE CODE	DWG NO.		REV	
FAB DWG:			B	8MHX9			-	
PCB DWG:			SCALE:	FILE NAME	Isolation.SchDoc		SHEET 5 OF 5	

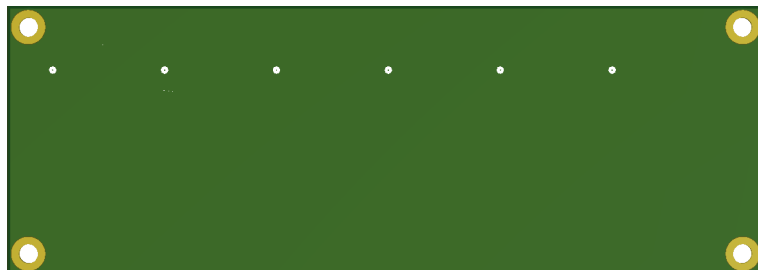
View from Top side (Scale 1:1)



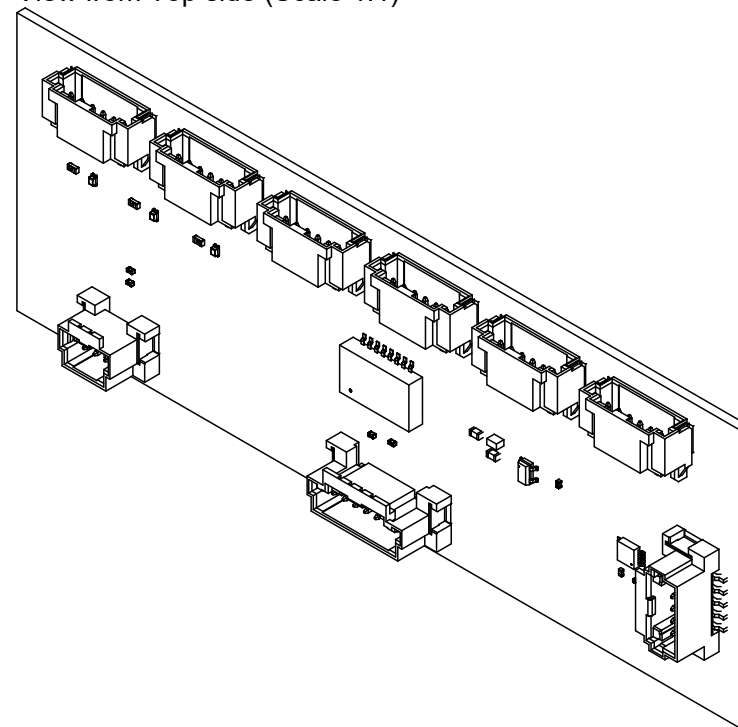
Realistic View



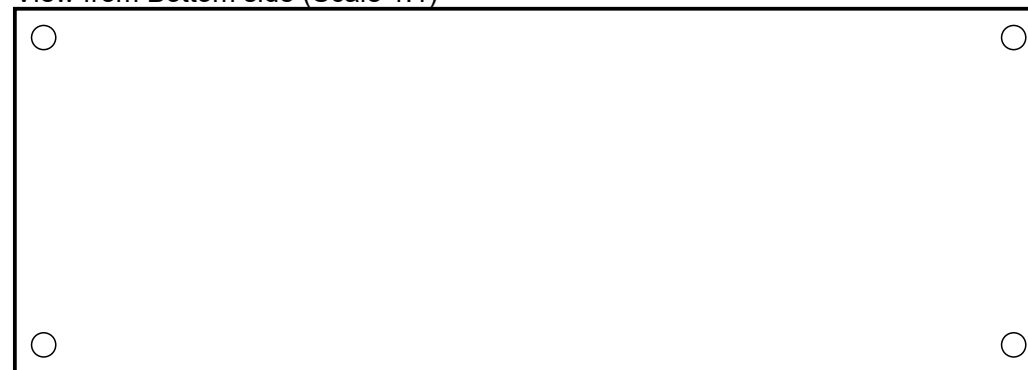
Realistic View

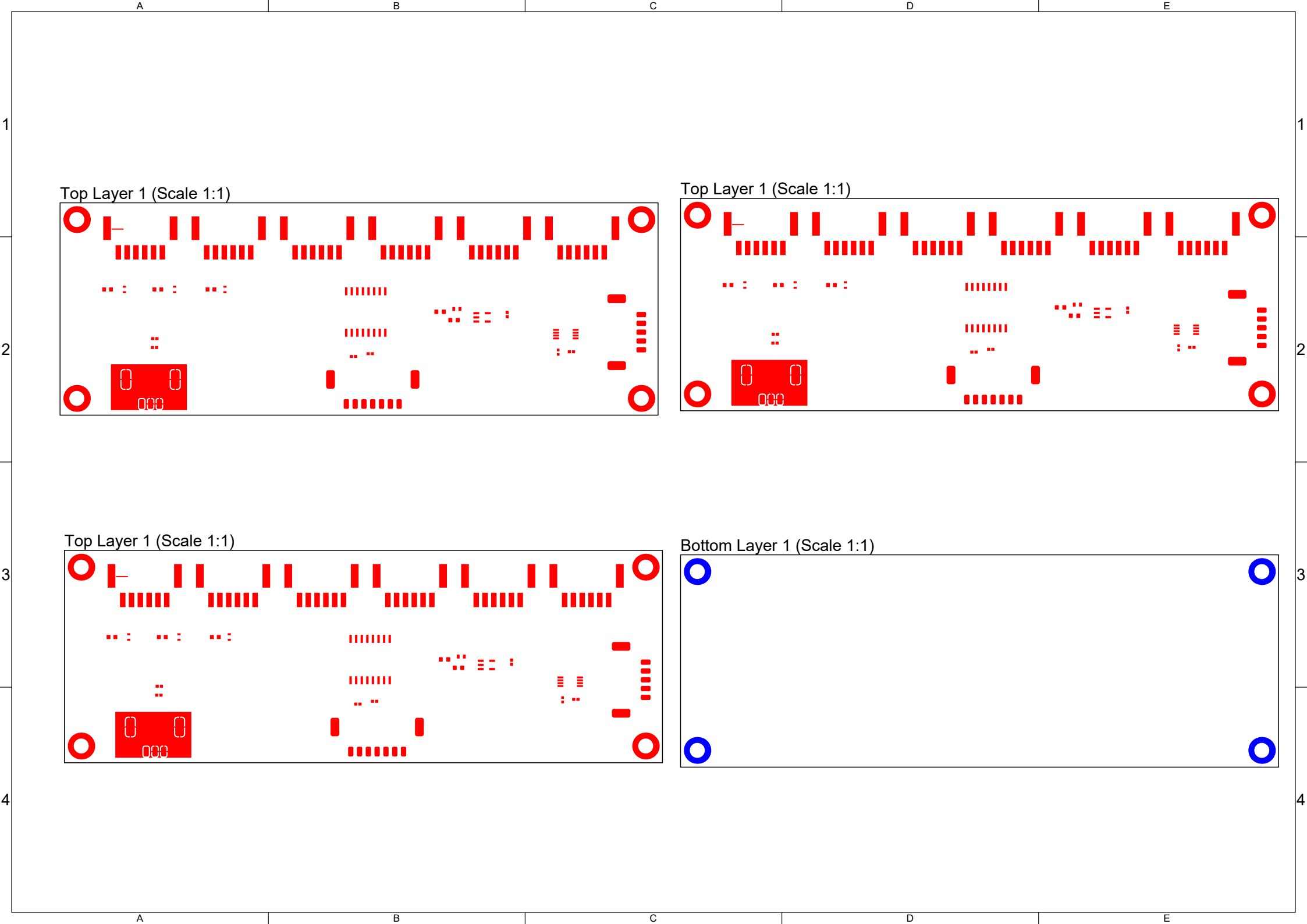


View from Top side (Scale 1:1)



View from Bottom side (Scale 1:1)





Drill Drawing View (Scale 1:1)



Drill Table

Symbol	Count	Hole Size	Plated	Hole Tolerance
○	4	3.40mm	Plated	
	4 Total			

Bill Of Materials

Line #	Designator	Quantity	Manufacturer 1	Manufacturer Part Number 1	Supplier 1	Supplier Part Number 1
1	C1, C2, C3, C4, C5, C8	6			Mouser	81-GRM155R71H104KE4D
2	C6	1			Mouser	80-C0603C105K4R
3	C7, C9	2			Mouser	81-GRT188R61E106ME3D
4	J1, J2, J3, J4, J5, J6	6			Mouser	538-502352-0600
5	J7	1			Mouser	538-560020-0330
6	J8	1			Mouser	538-560020-0530
7	J9	1			Mouser	538-560020-0730
8	LED1	1			Newark	95W3798
9	LED2	1			Newark	40AH1263
10	LED3	1			Newark	95W3797
11	R1	1			Mouser	667-ERJ-2RKF1000X
12	R2, R3, R4	3				
13	U1	1			Arrow Electronics	SN65HVD78DGK
14	U2	1			Mouser	584-ADUM260N1BRIZ
15	U3	1			Avnet	MIC5504-3.3YM5-TR

Total thickness: 1.55mm(61mil)

Quantity	Designator	Value	Comment	Manufacturer	Manufacturer Part Number	Supplier	Supplier Part Number
6	C1, C2, C3, C4, C5, C8	0.1uF	GRM155R71H104KE14J	Murata	GRM155R71H104KE14D	DigiKey	490-10700-1-ND
1	C6	1uF	1uF	KEMET	C0603C105K4RAC7867	DigiKey	399-C0603C105K4RAC7867CT-ND
2	C7, C9	10uF	GRT188R61E106ME13D	Murata Electronics	GRT188R61E106ME13D	Digi-Key	311-3494-1-ND
6	J1, J2, J3, J4, J5, J6		5023520600	Molex	5023520600	DigiKey	WM7173CT-ND
1	J7		5600200330	Molex	5600200330	DigiKey	WM24317CT-ND
1	J8		5600200530	Molex	5600200530	Digi-Key	900-5600200530CT-ND
1	J9		5600200730	Molex	5600200730	DigiKey	WM20884CT-ND
1	LED1		150060YS75000	Würth Elektronik	150060YS75000	DigiKey	732-4981-1-ND
1	LED2		150060RS75020	Würth Elektronik	150060RS75020	DigiKey	732-150060RS75020CT-ND
1	LED3		150060VS75000	Würth Elektronik	150060VS75000	DigiKey	732-4980-1-ND
1	R1	100	ERJ-2RKF1000X	Panasonic Electronic Components	ERJ-2RKF1000X	DigiKey	P100LCT-ND
3	R2, R3, R4	10K	10K	YAGEO		DigiKey	1276-3431-1-ND
1	U1		SN65HVD78DGK	Texas Instruments	SN65HVD78DGK	DigiKey	296-41611-5-ND
1	U2		ADUM260N1BRIZ	Analog Devices	ADUM260N1BRIZ	DigiKey	505-ADUM260N1BRIZ-ND
1	U3		MIC5504-3.3YM5-TR	Microchip	MIC5504-3.3YM5-TR	DigiKey	576-4764-1-ND