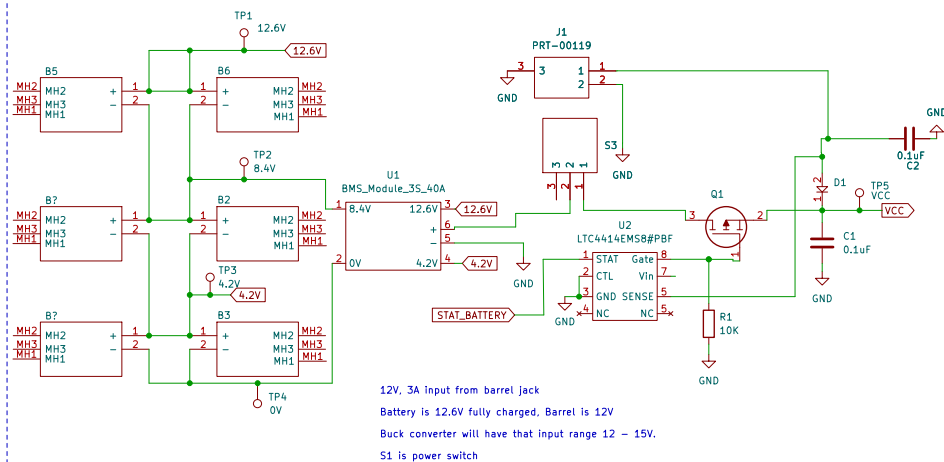
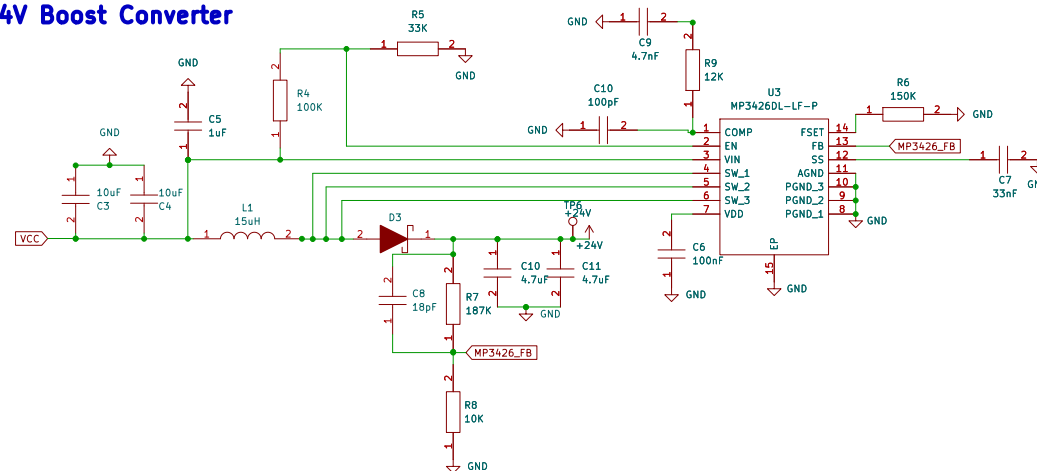


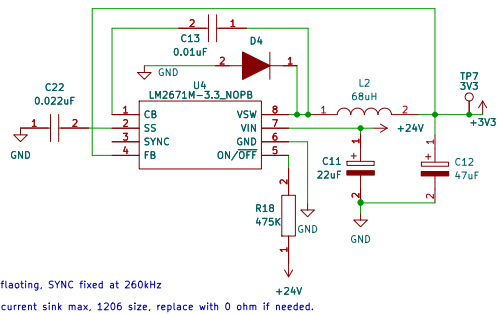
Input Power



## 24V Boost Converter

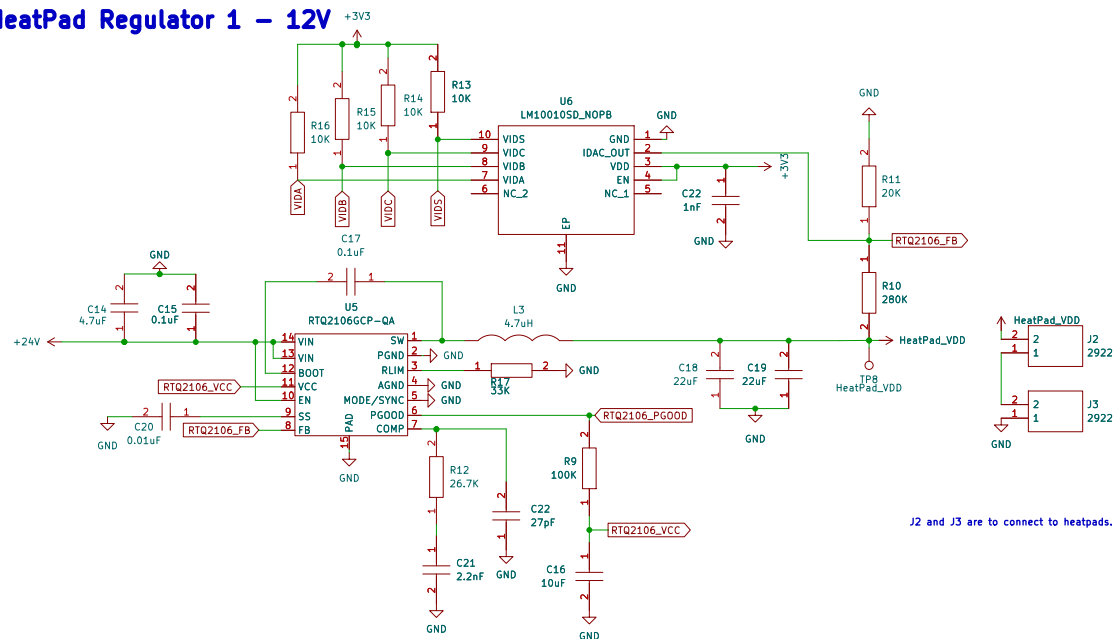


### 3V3 Buck Converter



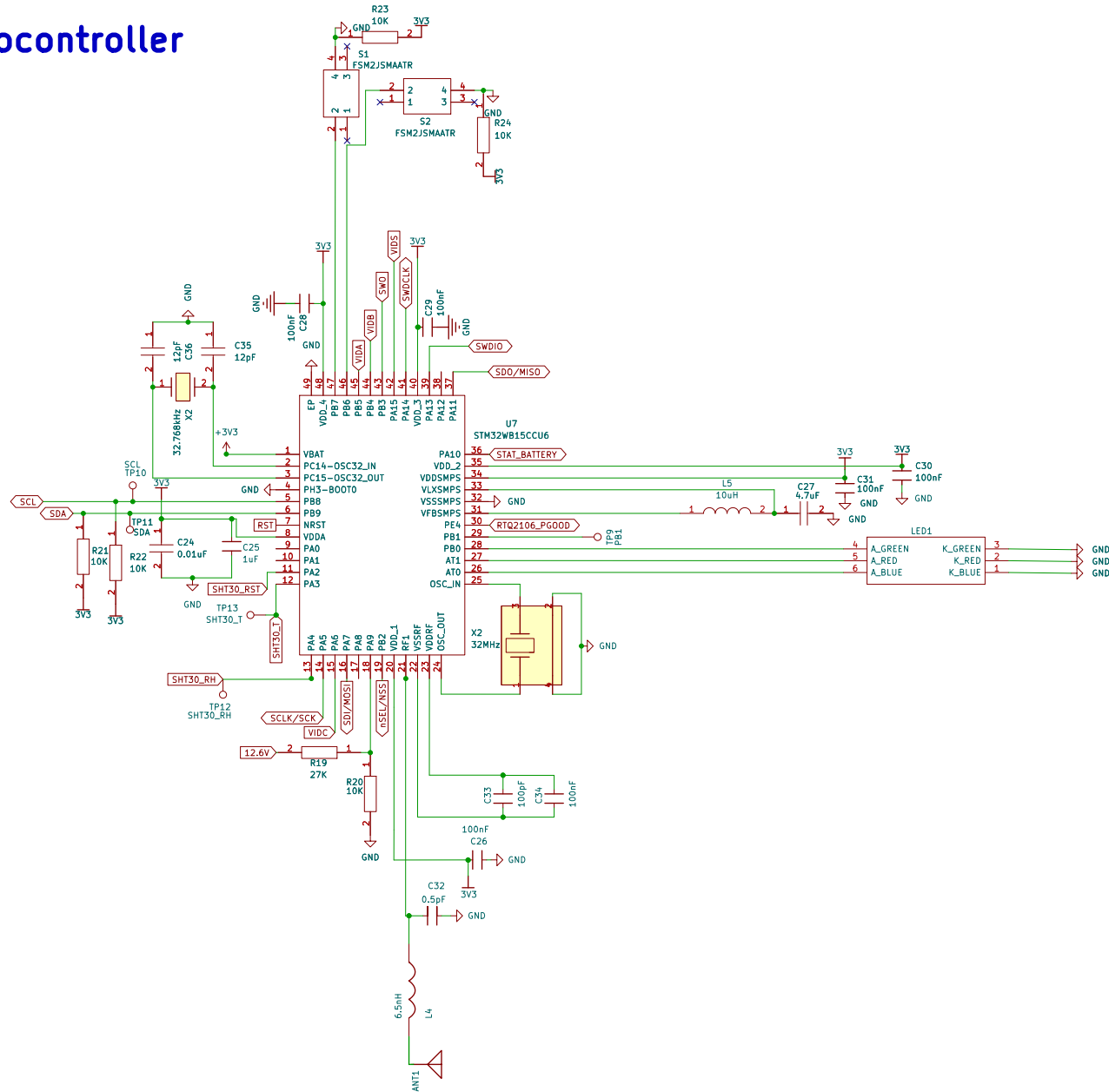
Pin 3 can be left floating, SYNC fixed at 260kHz  
ON/OFF pin 50uA current sink max, 1206 size, replace with 0 ohm if needed.

## HeatPad Regulator 1 – 12V

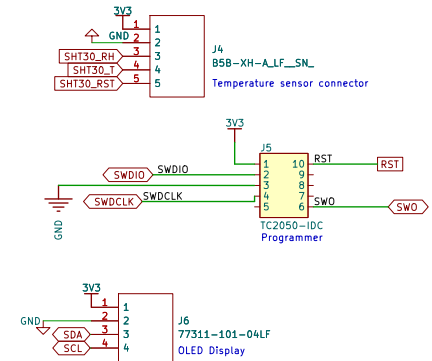


J2 and J3 are to connect to heatpads.

# Microcontroller



## Connectors



## Notes

Address for OLED display is 0x3C

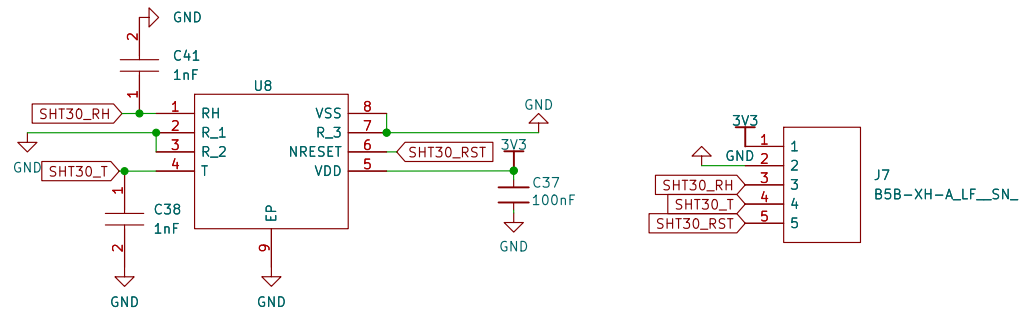
Sheet: /Micro/  
File: Tempeh\_Maker\_Micro.kicad\_sch

**Title: Tempeh Maker Micro**

Size: A3 Date: 2022-10-03  
KiCad E.D.A. kicad (6.0.7)

Rev:  
Id: 3/4

# Temperature Sensor



Temperature sensor is to be connected to a seperate board.

Sheet: /Temperature Sensor/		D
File: Temperature_Sensor.kicad_sch		
<b>Title:</b>		
Size: A4	Date:	<b>Rev:</b>
KiCad E.D.A. kicad (6.0.7)		Id: 4/4